

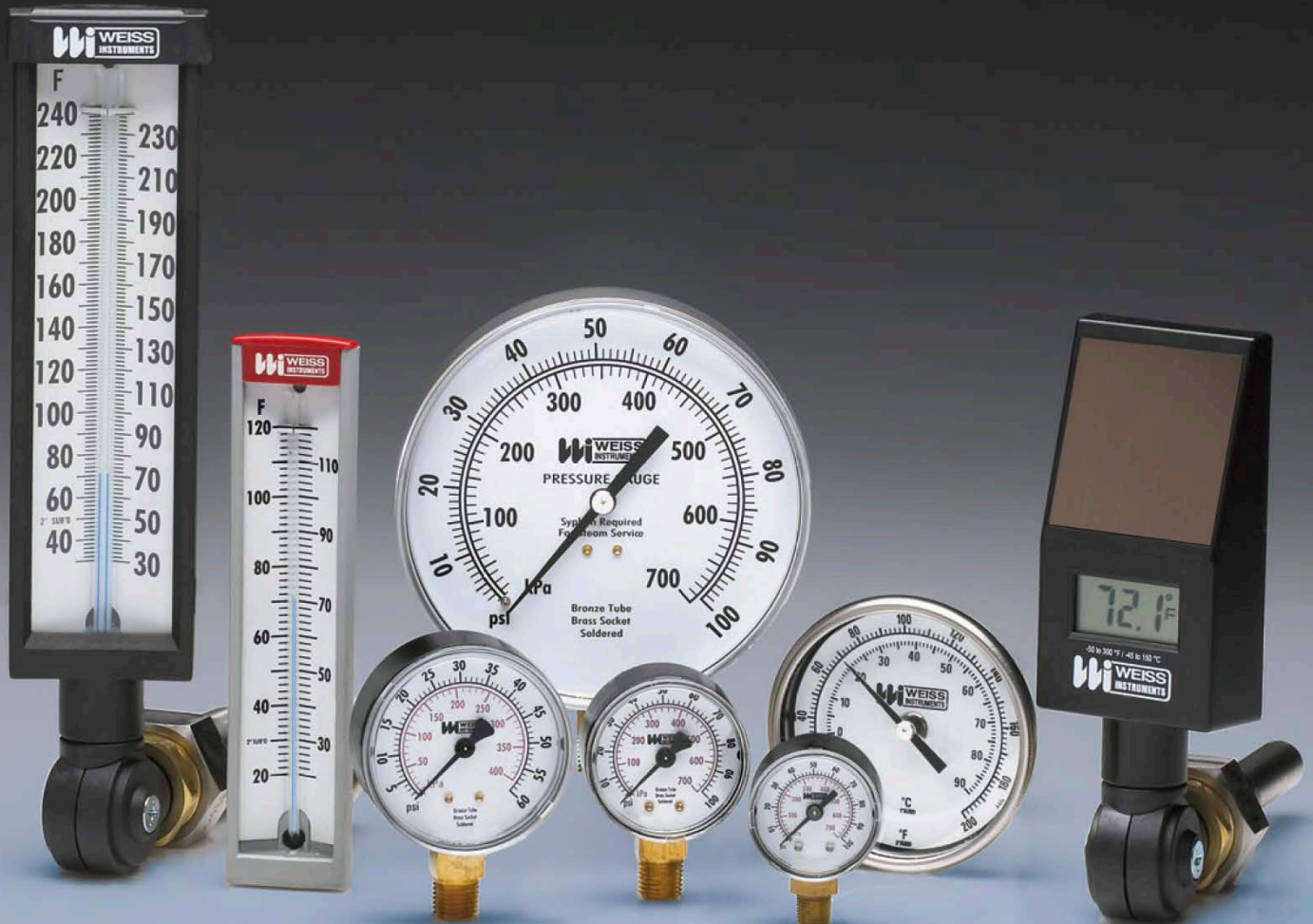
# WEISS INSTRUMENTS

Plumbing

Heating

Cooling

Temperature, Pressure Instruments



Throughout the 20th century, the Weiss name has been synonymous with quality and reliability in instrumentation. Some of the products we have manufactured for more than 135 years are proudly illustrated in this catalog, dedicated to your requirements in the plumbing, heating and cooling industry. Recent products such as our line of Vari-angle Digital Thermometers, fast becoming the Contractor choice, are also available to you.

Whether you require instruments for temperature or pressure monitoring, the Weiss line offers a choice. Our commitment to quality extends well beyond the products we provide. Each day we strive to offer our customers responsive service and reliable deliveries, qualities so necessary in today's business climate. Weiss understands the trends of today's market and we look forward to proving our ability to react to the daily challenge.

**Old World Craftsmanship . . . NEW WORLD TECHNOLOGY**  
**Since 1882**

## **INDEX**

	<b>Page</b>
Industrial Thermometers	3
Six Inch and Thrift Line Industrial Thermometers	4
Six Inch Hot & Chilled Water, Hot Water Bimetal and General Purpose Thermometers	5
Bimetal Dial Thermometers	6
Vapor Actuated Dial Thermometers	7
Digital Vari-angle Thermometers	8
Vari-angle Digital Transmitter and Infra-red Thermometer	9
Surface Thermometers and Sprinkler Service Gauges	10
Lead Free Gauges & Accessories	11
Digital Process Pressure Gauges	12
Trade Line and HVAC Pressure Gauges	13
Industrial Pressure Gauges	14
Process Pressure Gauges	15
Stainless Steel Industrial Gauges	16
Low Pressure Diaphragm Gauges and Tri-o-meters	17
Digital Vari-angle Thermometers and Temperature Switch Gauges	18
Temperature Switch Gauge Ordering Chart	19
Digital Thermometers - Vapor Type	20
Digital Thermometers - Gas Type	21
Diaphragm Seals	22
Gauge Accessories and Temperature / Pressure Test Plugs	23

# INDUSTRIAL GLASS THERMOMETERS

The Weiss 7" and 9" Vari-angle® is molded of GE Valox® polyester, 40% glass/mineral reinforced. This particular material has excellent strength, impact and stiffness properties which makes it perfect for the toughest applications. Some of the uses are process piping, tanks, pipelines in building construction, boilers and air ducts. The Vari-angle is a versatile thermometer that can be adjusted easily for optimum readability. Furnished in ranges up to and including 300°F.

® Vari-angle is a registered trademark of Weiss Instruments, Inc.

**FILL:** Weiss "Blue Ribbon Liquid".

**CASE:** Modern V-shape design with parts molded of GE Valox polyester, in black textured finish. Heavy glass protected front firmly secured against rattles by spring action.

**STEM:** For 3 1/2" stems only and ranges up to and including 300°F, the stem material is a precision die cast Zamac alloy. For ranges above 300°F, bulb chamber is a precision machined aluminum alloy with copper plated steel stem extension. *For Separable Socket connections only.*

® Valox is a registered trademark of the General Electric Co.



## **AIR DUCT THERMOMETERS**

9" SCALE	CAT NO.
3 1/2" STEM	9VD35
6" STEM	9VD6
9" STEM	9VD9
12" STEM	9VD12

ADD RANGE CODE FROM RANGE TABLE LISTING. **EX: 9VD6-180 (RANGE 30-180F)**  
ABOVE CAT. NUMBERS INCLUDE A REVERSIBLE DUCT MOUNTING FLANGE.

## **INDUSTRIAL THERMOMETERS**

7" SCALE	CAT NO.
3 1/2" STEM	7VU35
6" STEM	7VU6
9" STEM	7VU9
12" STEM	7VU12

ADD RANGE CODE FROM RANGE TABLE LISTING. **EX: 9VU35-240 (RANGE 30-240F)**  
ABOVE CATALOG NUMBERS **DO NOT INCLUDE SOCKETS** - ORDER SEPARATELY FROM THERMOWELL TABLE LISTING.

9" SCALE	CAT NO.
3 1/2" STEM	9VU35
6" STEM	9VU6
9" STEM	9VU9
12" STEM	9VU12

## **ALUMINUM CASE IND. THERMOMETERS**

9" SCALE	CAT NO.
3 1/2" STEM	A9VU35
6" STEM	A9VU6
9" STEM	A9VU9
12" STEM	A9VU12

ADD RANGE CODE FROM RANGE TABLE LISTING.

°F RANGES	SCALE DIV.	RANGE CODE
40-0-110°F	2°	110
0-120°F	1°	120
0-160°F	2°	160
30-180°F	2°	180
30-240°F	2°	240
30-300°F	5°	300
50-400°F	5°	400
50-550°F	5°	550

All Ranges 400°F (200°C) and higher are furnished in Aluminum Case.

## THERMOWELLS AND ACCESSORIES

STEM LENGTH	BRASS CAT NO.	304SS CAT NO.	316SS CAT NO.	NPT	INSERTION (U)	LAG EXTENSION (L)
3 1/2"	E35-75BS	E35-75SS	E35-75316SS	3/4	2 1/2	—
6"	ER6-75BS	ER6-75SS	ER6-75316SS	3/4	5	—
9"	ER9-75BS	ER9-75SS	ER9-75316SS	3/4	8	—
12"	ER12-75BS	ER12-75SS	ER12-75316SS	3/4	11	—
3 1/2"	ESS35-50BS	ESS35-50SS	ESS35-50316SS	1/2	2	1
3 1/2"	ESS35-75BS	ESS35-75SS	ESS35-75316SS	3/4	2	1
6"	EN6-75BS	EN6-75SS	EN6-75316SS	3/4	2 1/2	2 1/2
9"	ENS9-75BS	ENS9-75SS	ENS9-75316SS	3/4	5 1/2	2 1/2
12"	ENS12-75BS	ENS12-75SS	ENS12-75316SS	3/4	8 1/2	2 1/2

Catalog No. ECC - Brass Cap and Chain Assembly for Test Well

Other Lengths, Materials and NPT Sizes Available - Consult Factory.

# SIX INCH INDUSTRIAL THERMOMETERS



The Weiss 6" Navy Class Thermometer is compactly designed, ruggedly constructed and has excellent readability. The blue-reading liquid-in-glass tube maintains accuracy despite vibrations and shock.

This economical thermometer is built for general hydronic applications such as chilled and hot water lines and all small piping networks. It is especially adaptable to equipment operating under continuous vibrating conditions.

**FILL:** Weiss "Blue Ribbon Liquid".

**CASE:** Attractive modern design; V-shaped gray Valox case. Wide angle construction allows full scale width for easy reading.

**STEM ASSEMBLY:** Standard fittings of all brass construction which insures proper response to temperature changes. Standard dual threaded socket for 1/2" and 3/4" NPT. Meets all current military specifications (Army, Navy, Air Force).

## NAVY CLASS THERMOWELLS

STRAIGHT FORM	CAT NO.	ANGLE FORM	CAT NO.	BRASS	304SS	316SS	STEM	INSERTION U
2" STEM	5SS2	2" STEM	5AS2	E13S-BS	E13S-SS	E13S-316SS	2"	1 5/16"
4" STEM	5SS4	4" STEM	5AS4	E13L-BS	E13L-SS	E13L-316SS	4"	3 5/16"

ADD RANGE CODE FROM RANGE TABLE LISTING. EX: 5AS2-240 (RANGE 30-240F)  
 ABOVE CATALOG NUMBERS **DO NOT INCLUDE SOCKETS** - ORDER SEPARATELY  
 FROM THERMOWELL TABLE LISTING.

# THRIFT LINE THERMOMETERS



**Same Features as Navy Class Thermometer except:**

**STEM & SOCKET ASSEMBLY:** All brass stem. Removable socket secured to stem by set-screw. Socket standard in brass with 1/2" NPT.

STRAIGHT FORM	CAT NO. TL5S2
ANGLE FORM	CAT NO. TL5A2

ADD RANGE CODE FROM RANGE TABLE LISTING.  
 EX: TL5S2-240 (RANGE 30-240F). ABOVE CATALOG  
 NUMBERS **DO NOT INCLUDE SOCKETS** ORDER  
 SEPARATELY FROM THERMOWELL TABLE LISTING.

## THRIFT LINE THERMOWELLS

CAT NO.	NPT	INSERTION U
SF12-BS	1/2"	1 3/8"
SF34-BS	3/4"	1 3/8"

°F RANGES	SCALE DIV.	RANGE CODE
40-0-110°F	2°	110
20-120°F	2°	120
20-180°F	2°	180
30-240°F	2°	240

# SIX INCH HOT & CHILLED WATER THERMOMETERS

The Weiss 6" Hot & Chilled Water Thermometer is our most economical offering in industrial glass thermometers. The unit features components of non-corrosive materials and its compact design and excellent readability makes the HW & CW Series ideal for a variety of general purpose applications. Typical applications include small pipe lines, residential and commercial boilers, solar heating systems.

**SCALE LENGTH:** 5 1/2"

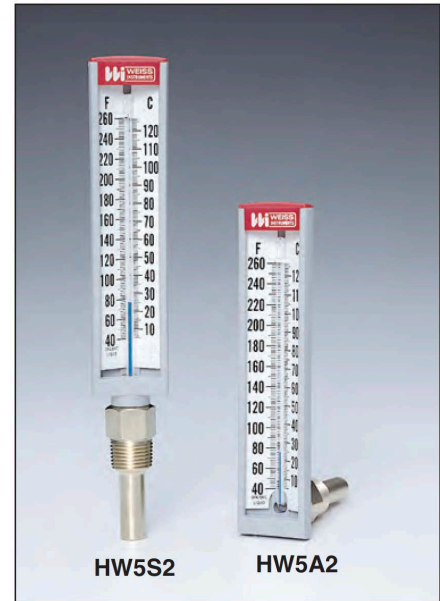
**SCALE:** White coated aluminum with permanently baked black markings.

**TUBE:** Magnifying blue liquid.

**CASE:** Molded V-shaped GE Valox® in gray textured finish.

**RANGE:** Hot Water 40-260°F (2° div.) and 5-125°C (1° div.)  
Chilled Water -40-110°F (2° div.) and -40-43°C (1° div.)

**CONNECTION:** Brass 1/2" NPT.



## HOT WATER

## CHILLED WATER

<b>STRAIGHT FORM</b>	<b>CAT NO. HW5S2</b>	<b>CAT NO. CW5S2</b>
<b>ANGLE FORM</b>	<b>CAT NO. HW5A2</b>	<b>CAT NO. CW5A2</b>

COMPLETE WITH 1/2" NPT BRASS CONNECTION WITH 1-3/8" INSERTION.

# HOT WATER BIMETAL DIAL THERMOMETERS

Weiss' most economical offering in the dial thermometers is ideal for a number of general heating applications including small pipelines. Units are furnished with 1/2" NPT brass removable socket or 3/4" sweat connection.

DESCRIPTION	DIAL SIZE	CAT. NO.	RANGE	FITTING
HOT WATER BIMETAL	2 1/2"	HWBM25	32-250 F&C	1/2" NPT
	4"	HWBM40	32-250 F&C	1/2" NPT
	2 1/2"	HWBM25S	32-250 F&C	3/4" SWEAT
	4"	HWBM40S	32-250 F&C	3/4" SWEAT



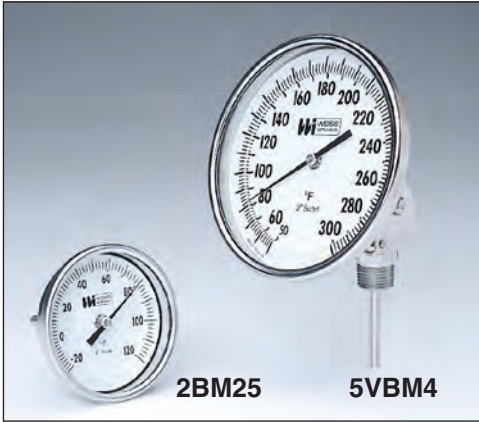
# GENERAL PURPOSE THERMOMETERS

The instruments illustrated here are general purpose type. The group consists of bimetal dial, glass pocket clip and pocket digital thermometers.

DESCRIPTION	CAT. NO.	RANGE
<b>DIAL THERMOMETERS</b>		
POCKET DIAL	PT125	25-125F
POCKET DIAL	PT180	40-0-180F
POCKET DIAL	PT220	0-220F
<b>GLASS THERMOMETERS</b>		
POCKET GLASS	PLC120	30-0-120F
POCKET GLASS	PLC220	0-220F
<b>DIGITAL THERMOMETERS</b>		
POCKET DIGITAL/AUTO OFF	DP300	58-0-302F&C
POCKET DIGITAL/WATER PROOF	DP300A	58-0-302F&C



# BIMETAL DIAL THERMOMETERS



Weiss offers a complete line of Commercial Bimetal Thermometers in 2", 3" and 5" dial sizes. All versions are hermetically sealed and silicone dampened for optimum performance in most industrial applications. A recalibration feature is standard on the 3" and 5" dial forms.

**CASE:** The entire case assembly is of Type 304 Stainless Steel. To insure a moisture proof unit, the heavy glass face is securely gasketed with the case and bezel assembly, hermetically sealed.

**STEM ASSEMBLY:** The stem and fixed thread connection is fabricated of stainless steel. All welded construction insures complete corrosion resistance.

With 2" dials the fixed thread is 1/4" NPT, 3" and 5" dials are 1/2" NPT.

## MODEL 2BM - 2" Angle

CAT NO.	Stem Length*	NPT
2BM25	2 1/2"	1/4"
2BM4	4"	1/4"
2BM6	6"	1/4"
2BM9	9"	1/4"
2BM12	12"	1/4"

## MODEL 3RBM, 3" Angle - 3RBMS, 3" Straight

CAT NO.	Stem Length*	NPT
3RBM25 3RBMS25	2 1/2"	1/2"
3RBM4 3RBMS4	4"	1/2"
3RBM6 3RBMS6	6"	1/2"
3RBM9 3RBMS9	9"	1/2"
3RBM12 3RBMS12	12"	1/2"

## MODEL 5RBM, 5" Angle - 5RBMS, 5" Str.

CAT NO.	Stem Length*	NPT
5RBM25 5RBMS25	2 1/2"	1/2"
5RBM4 5RBMS4	4"	1/2"
5RBM6 5RBMS6	6"	1/2"
5RBM9 5RBMS9	9"	1/2"
5RBM12 5RBMS12	12"	1/2"

## MODEL 3VBM, 3" Vari-angle

CAT NO.	Stem Length*	NPT
3VBM25	2 1/2"	1/2"
3VBM4	4"	1/2"
3VBM6	6"	1/2"
3VBM9	9"	1/2"
3VBM12	12"	1/2"



## MODEL 5VBM, 5" Vari-angle

CAT NO.	Stem Length*	NPT
5VBM25	2 1/2"	1/2"
5VBM4	4"	1/2"
5VBM6	6"	1/2"
5VBM9	9"	1/2"
5VBM12	12"	1/2"

\*Includes thread. Longer stem lengths available.

**NOTE:** When ordering Silicone Filled Bimetals add Prefix **SF** to appropriate Catalog No. Ex: **SF5RBM25**

FAHRENHEIT	FIG. INTER.	SCALE DIV.	CELSIUS	FIG INTER.	SCALE DIV.	DUAL SCALE - F & C	
-80/0/120	20°	2°	-50/0/50	10°	1°	-80/0/120F	-60/0/50C
-20/0/120	20°	2°	**0/50	5°	1/2°	-20/0/120F	-30/0/50C
**30/130	10°	1°	0/100	10°	1°	**30/130F	0/55C
0/200	20°	2°	0/150	10°	1°	0/200F	-15/0/90C
0/250	20°	2°	0/200	20°	2°	0/250F	-20/0/120C
50/300	20°	2°	0/300	50°	2°	50/300F	10/150C
50/400	50°	5°	*0/450	50°	5°	50/400F	10/200C
50/550	50°	5°	**100/550	50°	5°	50/550F	10/260C
*100/800	100°	10°				*100/800F	40/425C
**200/1000	100°	10°				**200/1000F	100/540C

\* Satisfactory for continuous service up to 800°F or 425°C. Can be used for intermittent service from 800-1000°F or 425-500°C.

\*\* Minimum stem length for these ranges is 4". \*\* Minimum stem length is 4" Straight and Vari-angle Form.

SEPARABLE SOCKETS FOR 3" AND 5" ONLY					DUCT MOUNTING FLANGES	
	CAT. NO.	STEM LGTH.	INSERT LGTH.		CAT. NO.	INSERTION
3/4" NPT	B25	2 1/2	1 1/2		BF3	STANDARD
	B35	4	2 1/2		BF3-2	EXTENSION NECK
	BR6	6	4 1/2			
	BR9	9	7 1/2			
	BR12	12	10 1/2			
	CAT. NO.	STEM LGTH.	INSERT LGTH.	LAG EXT.		
3/4" NPT	BSS35	4	1 1/2	13/4		
	BN6	6	2 1/2	2		
	BN9	9	4 1/2	3		
	BN12	12	7 1/2	3		

# VAPOR ACTUATED DIAL THERMOMETERS

Offered in 3 1/2" and 4 1/2" dial sizes, these thermometers are furnished in four stainless steel case configurations for direct, surface or panel mounting. The following coding chart illustrates a wide variety of bulb styles, capillaries and process connection fittings. The versatility of configurations makes these thermometers well suited to a wide range of applications including hot and chilled water pipeline systems, tanks and air ducts.

CODE	CATALOG NO.	DESCRIPTION				
I	35	<b>CASE SIZE</b> 3 1/2" Case				
	45	4 1/2" Case				
II	V	<b>CASE TYPE</b> Vari-angle,® Direct Mount				
	B	Back Flange, Surface Mount				
	R	Semi-flush, Panel Mount				
	Z	Adjustable Bracket, Remote Mount				
III	A	<b>CASE CONNECTION</b> Adjustable				
	B	Back Connection				
	L	Lower Connection				
IV	3	<b>CASE WINDOW</b> Snap in Lexan with "O" Ring				
V	<b>THERMAL SYSTEM</b>					
		<b>Bulb Type</b>	<b>Bulb Material</b>	<b>Capillary Material</b>	<b>Capillary Protection</b>	
	0	Union	Copper (Vari-angle only)			
	2	Plain	Copper	Copper	Cu. Braid	
	3	Plain	316 S.S.	316 S.S.	None	
	5	Union	Copper	Copper	Cu. Braid	
	7	Union	316 S.S.	Copper	Cu. Braid	
	8	Union	316 S.S.	316 S.S.	Intlock Armor*	
	9	Union	316 S.S.	316 S.S.	None	
* At bulb end 3 1/2" long. All systems have S.S. Spring capillary protection at indicating head. No. 5-7 system include S.S. spring at bulb end - S.S. jam nut standard on No. 8-9 system.						
VI	<b>BULB SELECTION</b>					
		<b>Thermal System No. 5 Thru 9 (Union)</b>		<b>Thermal System No. 2 &amp; 3 (Plain)</b>		<b>Max. System Len.</b>
		<b>Dia.</b>	<b>Length</b>	<b>Dia.</b>	<b>Length</b>	
	1	7/16	2.5"	N.A.	N.A.	10Ft.
	2*	7/16	3.4"	3/8	3.4	25Ft.
	3*	7/16	5.4"	3/8	5.9	50Ft.
	4	7/16	7.4"	3/8	7.9	99Ft.
5	7/16	9.4"	3/8	9.4	99Ft.	
X	1/8" x 180" Averaging Bulb					10Ft.
6	N.A.	N.A.	3/8	2.5	05Ft.	
* Only No. 2&3 bulbs are options for Vari-angle.						

STANDARD RANGES*		
-40-0-60F	0-150F	30-300F
-20-0-100F	0-180F	100-350F
-40-0-110F	40-240F	60-260F

\*All Ranges available in Dual Scale, F&C.



VII	<b>PROCESS CONNECTION FITTING</b>	
	1	Union Connection 1/2" NPT
	2	Union Connection 3/4" NPT
	3	Separable Socket 1/2" NPT
	4	Separable Socket 3/4" NPT
	5	Separable Socket 1/2" NPT with 2" Lag Extension (No.3 Bulb only)
6	Separable Socket 3/4" NPT with 2" Lag Extension (No.3 Bulb only)	
7	Air Duct Flange, Union Conn., Aluminum only	
9	Plain bulb, no fitting	
VIII	<b>PROCESS CONNECTION MATERIAL</b>	
	1	Brass
	2	304 Stainless Steel
	3	316 Stainless Steel
	5	Aluminum (Air Duct Flange only)
	0	None - Plain Bulb
IX A-B	See Example Below	<b>SYSTEM LENGTH SPECIFYING</b>
		9A - Use 2 digits: EX. 05, 10, 99 for length required. 9B - Use FT for feet, use IN for inches

**EXAMPLE FOR OBTAINING COMPLETE CATALOG NUMBER FROM CODES - SERIES VTR**

CODE I-IV (HEAD ASSY)      CODE V-VIII (THERMAL SYSTEM)      CODE IX A - B (CAPILLARY LENGTH)

**4 5 B L 3**      —      **5 2 3 1**      —      **0 5 F T**

RANGE  
**40-240 F**

**EXAMPLE FOR OBTAINING COMPLETE CATALOG NUMBER FROM CODES - SERIES VTVA**

CODE I-IV (HEAD ASSY)      CODE V-VIII (THERMAL SYSTEM)

**4 5 V A 3**      —      **0 2 3 1**

RANGE  
**40-0-60 F&C**

# DIGITAL VARI-ANGLE THERMOMETER



SPECIFICATIONS							
<b>CASE</b>	Hi-impact ABS						
<b>RANGE</b>	-50/300°F -45/150°C						
<b>DISPLAY</b>	1/2" LCD digits, wide ambient formula						
<b>ACCURACY</b>	1% of reading or 1° whichever is greater						
<b>RESOLUTION</b>	1/10° between -19.9/199.9°F (-28/93 °C)						
<b>RECALIBRATION</b>	Internal potentiometer						
<b>LUX RATING</b>	10 Lux (one foot-candle)						
<b>UPDATE</b>	10 seconds						
<b>AMBIENT OPERATING</b>	-30/140°F (-35/60 °C)						
<b>AMBIENT TEMP ERROR</b>	Zero						
<b>HUMIDITY</b>	100%						
<b>SENSOR</b>	Glass passivated thermistor						
<b>STEM ASSEMBLIES</b>	<table border="0"> <tr> <td><b>INDUSTRIAL GLASS</b></td> <td><b>BIMETALLIC</b></td> </tr> <tr> <td>Full conformance with Fed Spec GG-T-321D.</td> <td>Full conformance with ASME B40.3-1990.</td> </tr> <tr> <td>Fully interchangeable with Industrial Glass Thermometers.</td> <td>Fully interchangeable with Bimetallic Dial Thermometers.</td> </tr> </table>	<b>INDUSTRIAL GLASS</b>	<b>BIMETALLIC</b>	Full conformance with Fed Spec GG-T-321D.	Full conformance with ASME B40.3-1990.	Fully interchangeable with Industrial Glass Thermometers.	Fully interchangeable with Bimetallic Dial Thermometers.
<b>INDUSTRIAL GLASS</b>	<b>BIMETALLIC</b>						
Full conformance with Fed Spec GG-T-321D.	Full conformance with ASME B40.3-1990.						
Fully interchangeable with Industrial Glass Thermometers.	Fully interchangeable with Bimetallic Dial Thermometers.						

The Weiss patented\* Digital Vari-angle® Thermometer maintains the strict requirements for thermometers in hydronic applications in that they're self-powered and within 1% accuracy. This reliable series of digital thermometers offers the added feature of stem assemblies for direct replacement of mercury-in-glass types where environmental concerns exist. Whether on new installations or replacements, our Vari-angle Digital Thermometers include the same level of quality that the industry associates with the Vari-angle trademark and all Weiss Products.

\*Patent No. 5,196,781      ©Vari-angle is a registered trademark of Weiss Instruments, Inc.

CAT. NO.	DESCRIPTION	IDN
DVU35	3 1/2" Industrial Stem	62100
DVU6	6" Industrial Stem	62110
E35-75BS*	3/4" NPT 3 1/2" Socket	20300
ER6-75BS*	3/4" NPT 6" Socket	20500
EN6-75BS*	3/4" NPT 6" Ext. Socket	20501
DVBM25	2 1/2" x 1/2" NPT Stem - Bimetal Type	62120
DVBM4	4" x 1/2" NPT Stem - Bimetal Type	62130
DVBM6	6" x 1/2" NPT Stem - Bimetal Type	62140
DVD6	6" Stem w/Duct Mtg. Flange	62310
DVD9	9" Stem w/Duct Mtg. Flange	62320

\*For use with DVU thermometers on new installations.





## VARI-ANGLE DIGITAL TEMPERATURE TRANSMITTER

Introducing the first "self-indicating" temperature transmitter that is light powered. Combining Weiss's patented mercury-free Solar Industrial Thermometer with a loop-powered 4 to 20mA transmitter results in a single unit that allows local reading and remote transmitting for HVAC systems, building automation or anywhere local and remote readings are required. Dual sensors offer independent operation for reliability and convenience. The DVUT requires one thermowell which saves time and money without sacrificing performance.



**CASE** Hi-impact ABS  
**RANGE** with F/C Switch -50/300°F (-45/150°C)  
**DISPLAY** 1/2" LCD digits, wide ambient formula  
**ACCURACY** 1% of reading or 1° whichever is greater  
**RESOLUTION** 1/10° between -19.9/199.9°F  
**RECALIBRATION** Through case potentiometer adjustment  
**LUX RATING** 10 Lux (one foot-candle)  
**UPDATE** 10 seconds  
**AMBIENT OPERATING** -30/140°F (-35/60°C)  
**AMBIENT TEMP ERROR** Zero  
**HUMIDITY** 100%  
**SENSOR** Glass passivated thermistor - NTC  
**STEM ASSEMBLIES**

INDUSTRIAL GLASS	BIMETALLIC
Full conformance with Fed Spec GG-T-321D. Fully interchangeable with Industrial Glass Thermometers	Full conformance with ASME B40.3 - 1990. Fully interchangeable with Bimetallic Dial Thermometers

**TRANSMITTER**  
**RANGE** -58/302°F (-50/150°C)  
**OUTPUT** 4 to 20mA  
**OPERATING AMBIENT** -15/185°F (-25/85°C)  
**AMBIENT ERROR** .015% Span (°C)  
**SUPPLY** 8.5 to 35VDC  
**MAX.LOAD RESISTANCE** 775Ω with 24VDC Supply  
**ACCURACY** 0.5% of Span  
**SENSOR** Platinum 100ΩRTD

## INFRA-RED THERMOMETER

This Professional Grade Infra-red Thermometer is one of the most advanced units manufactured today. It's easy to use and applicable for almost any temperature measurement, including HVAC balancing, motor temperatures, air conditioning and hot / chilled water pipe lines.



- 14:1 Ratio
- Dual Laser Pointer
- Pistol Grip Design
- Back Light
- 1% Accuracy
- Auto Off

Cat. No.	Range (Switchable)	IDN
IR141	-58/986°F -50/530°C	60206

# SURFACE THERMOMETERS

Spring and Magnet Held Thermometers to monitor the surface temperatures of pipes, motors, engines, tanks, etc.



CAT. NO.	DIAL	RANGE	TYPE
MG25BM	2 1/2"	0 – 500 F&C	Magnet
SP25BM	2 1/2"	0 – 500 F&C	Spring
MG25BM	2 1/2"	30 – 250 F&C	Magnet
SP25BM	2 1/2"	30 – 250 F&C	Spring

# SPRINKLER SERVICE GAUGES

The Weiss Fire Protection Sprinkler Gauges are Underwriters Laboratory listed and Factory Mutual approved for fire protection sprinkler service. The 0-300 psi pressure range is used on "wet" systems where water is available to the sprinkler heads.

The 0-80 retard to 250 psi pressure range is used on dry systems where the lines are filled with air pressure until system activation.

## SPECIFICATIONS

**DIAL SIZE** - 3 1/2"

**CASE** - ABS (POLYCARBONATE)

**WINDOW** - POLYCARBONATE PUSH-IN

**ACCURACY** - ASME B40.1 GradeB 3-2-3%

**TUBE & SOCKET** - BRONZE / BRASS

**CONNECTION** - 1/4" NPT LOWER

**APPROVALS** - UL / FACTORY MUTUAL

**OPERATING TEMP** -40/150°F



Zero Zone indication, a standard feature on these gauges, reduces the potential risk of installing a damaged gauge on your equipment.

CAT NO.	RANGE
SSG-300-4L	0-300 psi (Water)
SSG-080-4L	0-80 Retard to 250 psi (Air)

# LEAD FREE GAUGES & ACCESSORIES

## SPECIFICATIONS – 4CTSLF

**DIAL SIZE** - 4 1/2"

**CASE** - Drawn stainless steel, with push-in Lexan window.

**TUBE** - Phosphor bronze.

**SOLDER CONNECTION** - Lead Free.

**SOCKET** < 0.25% Lead Free Brass

**CERTIFICATION** - UL in accordance with NSF/ANSI 372

**CERTIFICATION NR** - 20131004-MH59893

**CONNECTION** - 1/4" NPT Bottom

**DIAL** - White coated metal lithographed with black graduations lines and numerals.

**POINTER** - Slotted adjustable.

**ACCURACY** - 1% ANSI-ASME B40.1 Grade 1A.

**OPERATING TEMPERATURE**

Ambient: -40°F to 140°F (-40°C to 60°C)

Media: 140°F (+60°C) Maximum



## UTILITY PRESSURE GAUGES - WEISS SERIES 25CTSLF

CAT. NO.	RANGES		ANSI/ASME
25CTSLF Black Plastic Case	0 - 30 PSI	0-160 PSI	B40.1 Grade B
	0 - 60 PSI	0-200 PSI	
	0-100 PSI	0-300 PSI	

## HVAC PRESSURE GAUGES - WEISS SERIES 4CTSLF

CAT. NO.	RANGES		ANSI/ASME
4CTSLF Stainless Steel Case	0 - 30 PSI	0-160 PSI	B40.1 Grade 1A
	0 - 60 PSI	0-200 PSI	
	0-100 PSI	0-300 PSI	

## BALL & NEEDLE VALVES & SNUBBERS FOR HVAC PRESSURE GAUGES

CAT. NO.	SIZE	MATERIAL	RATING
BLC-14LF (Ball Valve)	1/4" FNPT x 1/4" FNPT	Lead Free Brass	600 psi / 300°F
25NVBRLF (Needle Valve)	1/4" FNPT x 1/4" FNPT	Lead Free Brass	600 psi / 300°F
PSN-B-E-25LF (Snubber)	1/4" FNPT x 1/4" MNPT	Lead Free Brass	600 psi / 300°F

## LEAD FREE THERMOWELLS FOR INDUSTRIAL GLASS, BIMETAL DIAL AND DIGITAL THERMOMETERS

CAT NO.	LENGTH	APPLICABLE TO THERMOMETER ITEMS	ANSI/ASME
E35-75BSLF	4 1/4	9VU35, A9VU35, DVU35	B40.2
ESS35-75BSLF	4 1/4	9VU35, A9VU35, DVU35	B40.2
ER6-75BSLF	6 3/4	9VU6, A9VU6, DVU6	B40.2
EN6-75BSLF	6 3/4	9VU6, A9VU6, DVU6	B40.2
B25-75BSLF	2 3/4	5VBM25, 3VBM25	B40.2
B35-75BSLF	4 1/4	5VBM4, 3VBM4	B40.2

# DIGITAL PROCESS PRESSURE GAUGES

## Advanced Technology in Pressure Measurement

The wide acceptance and success of Weiss Light Powered Instruments is attributed to their high level of quality and reliability as well as an understanding about the impractical nature of changing batteries in industrial applications.



DUGY3

**LIGHT POWER**

**GREEN POWER**

- IP65 Weatherproof Housing
- ASME B40.7 Conformance
- User Selector Functions
- 4-20 MA Output
- <10 Lux Rating
- Large Display

### SPECIFICATIONS

**Case:** 4 1/2" Black Glass Reinforced Thermo Plastic (PBTP) Solid Front Construction, Blow Out Back Safety Design, Weatherproof IP65

**Window:** Acrylic

**Sensor:** Gold Plated Ceramic, Kalrez® (chemically resistant) O-Ring Seal

**Wetted Materials:** 316SS

**Ranges:** Vacuum to 1,000 psi (See Range Table)

**Accuracy:** 0.5% Full Scale ASME 40.7 AA (.25% available consult factory)

**Ambient Operating:** -10–140°F (-10–60°C)

### DISPLAY

**Type:** LCD

**Lux Rating:** <10 (only one foot-candle)

**Resolution:** 1/4%

**Digits:** (4) 5/8" High

**Update:** One second  
Two seconds (under 20 Lux)

### USER SELECTOR FUNCTIONS

- Left Units** Select from 4 units of measure PSI, kPa, KG/CM2 or Bar with corresponding Vacuum
- Center Zero** Adjustment ± 4 increments
- Right Avg.** Set reading in average of 1,2,4,8 seconds

316SS Sensor / 316SS Socket 1/4"NPT		316SS Sensor / 316SS Socket 1/2" NPT	
Range	Cat. No.	Range	Cat. No.
15 psi*	DUGY3-015-4L	15 psi*	DUGY3-015-2L
60 psi*	DUGY3-060-4L	60 psi*	DUGY3-060-2L
100 psi*	DUGY3-100-4L	100 psi*	DUGY3-100-2L
200 psi	DUGY3-200-4L	200 psi	DUGY3-200-2L
400 psi	DUGY3-400-4L	400 psi	DUGY3-400-2L
1000 psi	DUGY3-1000-4L	1000 psi	DUGY3-1000-2L

\*These Ranges (Items also indicate Vacuum)

Digital Ranges				
Vacuum	psi	kPa	KG/CM2	Bar
30" HG*	15	100	1	1
30" HG*	60	400	4	4
30" HG*	100	700	7	7
–	200	1400	14	14
–	400	2800	28	28
–	1000	7000	70	70
*Metric Reads		-100 kPa	76 CM/HG	-1 Bar

### HOW TO ORDER – DUGY3 - Range Code - NPT Size - Location - Options

Range	Code	Size	Code	Code
Vac to 15 psi*	015	1/4 Lower	4L	SG
Vac to 60 psi*	060	1/2 Lower	2L	T
Vac to 100 psi*	100			
0-200 psi	200			
0-400 psi	400			
0-1000psi	1000			
<b>Ex: DUGY3-060-4L</b>				

### OPTIONS

- SG-Safety Glass**
- T - 4-20 MA Output**  
Starts at zero psi to top of Range

# TRADE LINE PRESSURE GAUGES

Weiss TL Gauges are intended for general service conditions, for pressure or vacuum on air, oil, water, gas or other mediums that do not attack brass. TL Gauges are furnished in drawn steel cases, finished in black. The 1 1/2" dials are supplied with 1/8" NPT and 2" dial versions are available with 1/4" or 1/8" NPT connections. All other dial sizes are 1/4" NPT. All gauges conform with ANSI B40.1 accuracy Grade B-2 mid scale.



TO SPECIFY				
CHOOSE CAT. NO. – PLUS RANGE CODE – PLUS CONNECTION				
INDICATES DIAL SIZE	RANGE CODE	RANGE	SIZE & LOCATION	
TL15	1 1/2"	015	0-15	8L = 1/8" Lower
TL20	2"	030	0-30	8B = 1/8" Ctr Back
TL25	2 1/2"	100	0-100	
TL40	4"	160	0-160	4L = 1/4" Lower
		200	0-200	
		300	0-300	4B = 1/4" Ctr Back
		400	0-400	
		600	0-600	
		VAC	0-30"HG	
		V30	30-0-30	
		V60	30-0-60	
		V100	30-0-100	
		V150	30-0-150	

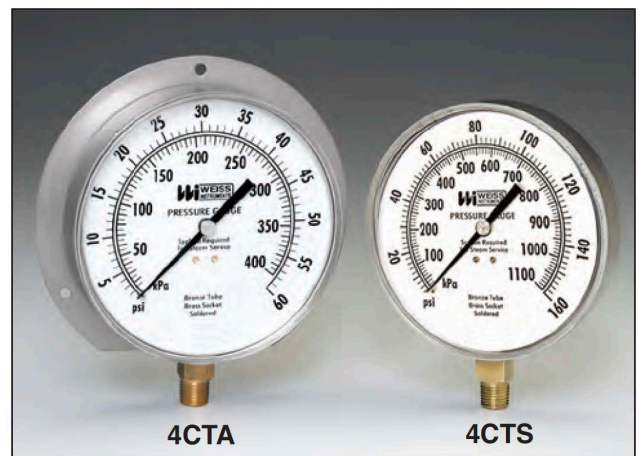
Ex: TL25 – 100 – 4L

PRESSURE		
RANGE	GRADUATIONS	FIG. INTERVAL
0-15	0.5	1
0-30	0.5	5
0-60	1	5
0-100	2	10
0-160	5	20
0-200	5	20
0-300	5	30
0-400	10	50
0-600	10	50
COMPOUND		
30-0-15	1" Hg.-0.5p	5" Hg.-3p
30-0-30	1" Hg.-1p	10" Hg.-5p
30-0-60	2" Hg.-1p	10" Hg.-10p
30-0-100	5" Hg.-2p	15" Hg.-10p
30-0-150	5" Hg.-2p	30" Hg.-20p
VACUUM		
30"-0	0-5" In. Hg.	5" In. Hg.

# HVAC PRESSURE GAUGES

Weiss 4 1/2" CTS/CTA Pressure Gauges are designed to meet the standard specifications for Heating, Cooling and Air Conditioning applications. The CTS has a stainless steel case for stem mount and the CTA is an aluminum back flange case for either stem or surface mounting. Both versions conform with ANSI B40.1 accuracy Grade 1A.

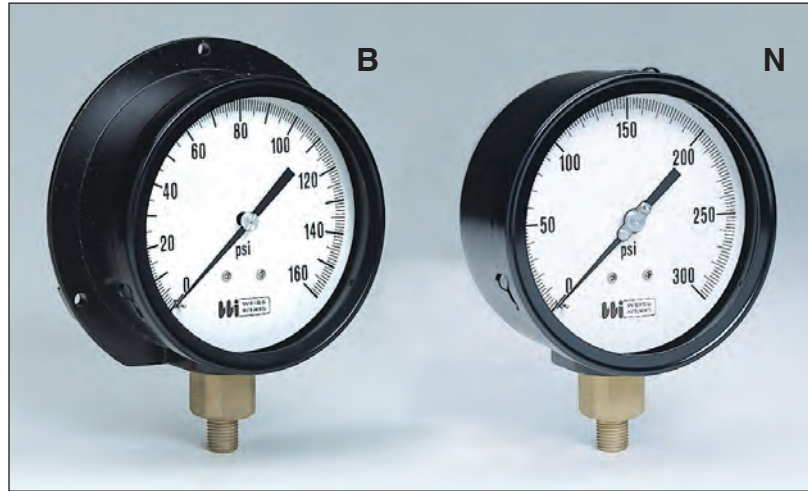
- POINTER:** Balanced adjustable aluminum.
- DIAL:** White coated metal, lithographed with black graduation lines and numerals.
- MOVEMENT:** Brass construction.
- BOURDON TUBE & SOCKET:** Phosphor bronze bourdon. Brass stock socket 9/16" square wrench surface and 1/4" NPT lower connection. Soft-soldered construction.



PRESSURE			COMPOUND		
RANGE	GRADUATIONS	FIG. INTERVAL	RANGE	GRADUATIONS	FIG. INTERVAL
0-15	0.2	1	30-0-15*	1" Hg.-0.5p	10" Hg.-5p
0-30	0.5	5	30-0-30	1" Hg.-0.5p	10" Hg.-10p
0-60	1	5	30-0-60	1" Hg.- 1p	10" Hg.-10p
0-100	1	10	30-0-100	2" Hg.- 1p	30" Hg.-20p
0-160	2	20	30-0-150*	2" Hg.- 2p	30" Hg.-20p
0-200	2	20	30-0-300*	10" Hg.- 5p	30" Hg.-50p
0-300	5	50			
0-400	5	50			
0-600	10	50			
			VACUUM		
			30"-0	0-5" In. Hg.	5" In. Hg.

\*In the 4CTA-1 Gauge these ranges are not available.

# INDUSTRIAL PRESSURE GAUGES



The Weiss Series 088 Gauges are ideal for use on boilers, compressors, pumps, and any industrial applications that require a heavy duty internal gauge. Our 4 1/2" case styles have a glass window, solid back with safety blow out disc standard. Available in two case styles—Style B: Aluminum Back Flange and Style N: Aluminum No Flange, all have 1/4" NPT lower mount connection. Optional 1/2" NPT available.

TO SPECIFY					
SIZE	CAT. NO.	CASE STYLE	NPT	MOUNT	RANGE
4 1/2"	4PG-1	B - Back Flange	1/4"	LM*	—
4 1/2"	4UG-1	N - No Flange	1/4"	LM	—
Ex: 4PGN-1 1/4" LM 0-160psi			*LM - Lower Mount		

CAT. NO.	POINTER	RANGE LIMITS	BOURDON TUBE	MOVEMENT	SOCKET	ACCURACY
PG-1	SLOTTED ADJUSTABLE	VACUUM THRU 0-600 psi	"C" PHOSPHOR BRONZE SILVER BRAZED JOINTS	BRASS BUSHED ROTARY	BRASS	1% ANSI GRADE A
UG-1	MICROMETER ADJUSTABLE	VACUUM THRU 0-600 psi	"C" PHOSPHOR BRONZE SILVER BRAZED JOINTS	STN. STL. BUSHED ROTARY	BRASS	1/2 of 1% ANSI GRADE 2A

PRESSURE			COMPOUND		
RANGE	GRADUATIONS	FIG. INTERVAL	RANGE	GRADUATIONS	FIG. INTERVAL
0-15	0.1	1	30-0-15	0.5" Hg.- 0.2p	5"Hg.-3p
0-30	0.2	5	30-0-30	1" Hg.-0.5p	10" Hg.- 5p
0-60	0.5	5	30-0-60	1" Hg.- 1p	10" Hg.-10p
0-100	1	10	30-0-100	2" Hg.- 1p	10" Hg.-10p
0-160	1	20	30-0-150	5" Hg.- 2p	10"Hg.- 20p
0-200	2	20	30-0-300	5" Hg.- 2p	30"Hg.- 25p
0-300	2	50	<b>VACUUM</b>		
0-400	5	50	30"-0	0.2" In. Hg.	5" In. Hg.
0-600	5	50			

# PROCESS PRESSURE GAUGES

The 4 1/2" Process Gauge is designed for those severe service applications where operator safety is a factor. This solid front gauge is equipped with a solid wall separating the indicating dial from the bourdon tube and a blow-out back which will release from the case if the bourdon tube should rupture.

Available with phosphor bronze/brass, 316 stainless steel or monel internals, liquid-filled or dry construction, this gauge is ideally suited for the requirements of the Process, Power and Chemical Industries. This high quality gauge offers the benefit of field filling without any additional kits or accessories.



NF4UGY1

## NF4UGY1 NON-FILLED / LF4UGY1 LIQUID FILLED

**SOCKET:** Brass  
**BOURDON TUBE:** Phosphor bronze - C tube to 600 psi. AISI 316 stainless steel coiled tube 1000 psi and above.  
**CONNECTING JOINTS:** Silver brazed  
**MOVEMENT:** Bushed stainless steel  
**DIAL:** White aluminum, black & red markings (psi & kPa)  
**POINTER:** Black aluminum, micrometer adjustable  
**CASE:** Black reinforced thermoplastic fiberglass  
**WINDOW:** Acrylic  
**RING:** Reinforced polypropylene  
**GASKETS:** Ethylene propylene  
**ACCURACY:** 0.5% ASME B40.1 Grade 2A  
**CONNECTIONS:** 1/4" or 1/2" NPT lower  
**CAT. NO. LF4UGY1:** Lower connection only.

## NF4UGY2 NON-FILLED / LF4UGY2 LIQUID FILLED

**SOCKET:** AISI 316 stainless steel  
**BOURDON TUBE:** AISI 316 S.S. - C tube to 600 psi. Coiled tube 1000 psi and above.  
**CONNECTING JOINTS:** Welded  
**MOVEMENT:** Bushed stainless steel  
**DIAL:** White aluminum, black & red markings (psi & kPa)  
**POINTER:** Black aluminum, micrometer adjustable  
**CASE:** Black reinforced thermoplastic fiberglass  
**WINDOW:** Acrylic  
**RING:** Reinforced polypropylene  
**GASKETS:** Ethylene propylene  
**ACCURACY:** 0.5% ASME B40.1 Grade 2A  
**CONNECTIONS:** 1/4" or 1/2" NPT lower or lower back  
**CAT. NO. LF4UGY2:** Lower connection only.

PRESSURE			COMPOUND		
RANGE	GRADUATIONS	FIG. INTERVAL	RANGE	GRADUATIONS	FIG. INTERVAL
0-15	0.1	1	30-0-15	0.5" Hg.-0.2p	5" Hg.-3p
0-30	0.2	5	30-0-30	1" Hg.-0.5p	10" Hg.-5p
0-60	0.5	5	30-0-60	1" Hg.-1p	10" Hg.-10p
0-100	1	10	30-0-100	2" Hg.-1p	10" Hg.-10p
0-160	1	20	30-0-150	5" Hg.-2p	10" Hg.-20p
0-200	2	20	30-0-300	5" Hg.-2p	30" Hg.-25p
0-300	2	50			
0-400	5	50			
0-600	5	50			
0-800	10	100			
0-1000	10	100			
0-1500	10	200			
0-2000	20	200			
0-3000	20	500			
0-5000	50	500			
0-10000	100	1000			
0-20000	200	2000			
			VACUUM		
			bar -1-0	0.01	0.1
			kPa -100-0	1	10
			30"-0	0.2" In. Hg.	5" In. Hg.

# STAINLESS STEEL INDUSTRIAL GAUGES



LF251



LF442

Where vibration, corrosion and pulsating conditions exist, the Weiss line of stainless steel cased liquid filled and dry construction industrial pressure gauges are designed to meet the most severe applications. This series of instruments includes a wide range of accuracies, case patterns and construction materials to cover most requirements.

CHOOSE CAT. NO.		PLUS RANGE CODE		PLUS CONNECTION		
INDICATES CONSTRUCTION		RANGE CODE		SIZE & LOCATION		
CAT. NO.	DIAL SIZE	INTERNALS	RANGE CODE	RANGE - psi	kPa	
<b>LIQUID FILL</b>			015	0-15	0-100	<b>4L</b> = 1/4" Lower
LF251	2 1/2"	Bronze	030	0-30	0-200	<b>4B</b> = 1/4" Back
LF252	2 1/2"	316S.S.	060	0-60	0-400	
LF441	4"	Bronze	100	0-100	0-700	<b>2L</b> = 1/2" Lower
LF442	4"	316S.S.	160	0-160	0-1100	<b>2B</b> = 1/2" Back
LF602	6"	316S.S.	200	0-200	0-1400	
			300	0-300	0-2100	
			400	0-400	0-2800	
<b>DRY</b>			600	0-600	0-4200	
NF252	2 1/2"	316S.S.	1000	0-1000	0-7000	
NF401	4"	Bronze	1500	0-1500	0-10,000	
NF402	4"	316S.S.	2000	0-2000	0-14,000	
NF601	6"	Bronze	3000	0-3000	0-21,000	
NF602	6"	316S.S.	5000	0-5000	0-40,000	
			6000	0-6000	0-42,000	
			10000	0-10,000	0-70,000	
			15000	0-15,000	0-100,000	
			20000	0-20,000	0-140,000	
			VAC	0-30" HG	-100-0	
			V30	30"-0-30	-100-200	
			V60	30"-0-60	-100-400	
			V100	30"-0-100	-100-700	
			V150	30"-0-150	-100-1000	
			V200	30"-0-200	-100-1400	
			V300	30"-0-300	-100-2100	

Ex: LF251 – 100 – 4L

Panel Mounting Case Styles available - see Catalog SSG-9/13



# LOW PRESSURE DIAPHRAGM GAUGES

Designed for pressures below 15 psi, the Weiss Diaphragm Gauge offers an instrument highly sensitive yet durably constructed. Furnished in black drawn steel cases. Available in 2 1/2" dial size and 1/4" NPT lower or center back connected.

**CASE:** Black drawn steel, with twist lock polycarbonate window. **DIAPHRAGM:** Copper alloy.

**SOCKET:** Brass, 1/4" NPT lower or center back connection. **MOVEMENT:** Brass.

**DIAL:** White coated metal lithographed with black graduations lines and numerals.

**POINTER:** Balanced design, aluminum in black finish.



SERIES & TYPE	+		RANGE CODE		+		CONNECTION
	TYPE	CODE	RANGE				
<b>DG25C</b> Combination Pressure Dial	C	100	100"WP&60 oz/in				4L (1/4" NPT Lower)
<b>DG25P</b> Pressure Dial	C	145	35"WP&20 oz/in				4B (1/4" NPT Back)
<b>DG25V</b> Vacuum Dial	C	015	15"WP&9 oz/in				
	P	003	0-3 PSI				
	P	005	0-5 PSI				
	P	010	0-10 PSI				
	P	015	0-15 PSI				
	P	030	0-30" WP				
	P	060	0-60" WP				
	P	100	0-100" WP				
	V	030	30-0" WV				
	V	060	60-0" WV				
	V	100	100-0" WV				

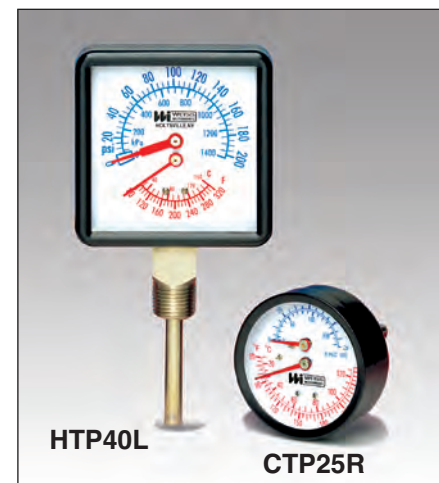
Ex: DG25P-005-4L Pressure Dial 0-5 PSI, 1/4" NPT Lower Connection

PRESSURE			COMBINATION		INNER SCALE		OUTER SCALE	
RANGE	GRADUATIONS	FIG. INTERVAL	IN. WATER OUTER SCALE	OZ. WATER INNER SCALE	GRADS	FIGURE INTERVAL	GRADS	FIGURE INTERVAL
0-3 psi	0.05	0.5	0-35	0-20	0.5	5.0	0.5	5.0
0-5 psi	0.1	1.0	0-15	0-9	0.2	1.0	0.2	3.0
0-10 psi	0.1	1.0	0-60	0-35	1.0	5.0	1.0	10.0
inch/water								
0-15	0.2	3.0						
0-30	0.5	5.0						
0-60	1.0	10.0						
0-100	1.0	10.0						
oz.-sq. in.			VACUUM - in water vac.					
0-10	0.1	1.0	RANGE		GRADUATIONS		FIG. INTERVAL	
0-15	0.2	3.0	30-0		0.5		5.0	
0-30	1.0	5.0	60-0		1.0		10.0	
0-100	1.0	10.0	100-0		1.0		10.0	

# TRI-O-METERS

The Weiss Tri-o-meter is designed for use on all types of hot water heating systems. One instrument reads the water pressure, water temperature and system head in feet of H<sub>2</sub>O. Available in 2 1/2" dial with 1/4" NPT rear connection and 3 1/2" dial with 1/2" NPT lower or rear connected.

<b>Series C</b>	0-75 psi & Ft. of H <sub>2</sub> O	60-260 F&C
<b>H</b>	0-200 psi & kPa	80-320 F&C
CAT. NO.	DESCRIPTION	
CTP25R	1/4" NPT Rear	
CTP25RX	1/4" NPT Rear x 2" Extension	
CTP40RSX	1/2" NPT Rear	
CTP40L	1/2" NPT Lower	
HTP40RSX	1/2" NPT Rear	
HTP40L	1/2" NPT Lower	



# DIGITAL VARI-ANGLE THERMOMETERS



**CASE SIZE & MATERIAL** - 5" Hermetically Sealed St.St.  
**RANGE** -50 to 300°F (-45 to 150°C) with F/C switch  
**ACCURACY** - 1%  
**WINDOW** - Glass / Acrylic / Shatterproof Glass  
**LUX RATING** - 10 Lux (one foot candle)  
**DISPLAY** - 1/2" LCD Digits  
**RESOLUTION** - 0.1°F between -19.9/199.9°F (-20/93°C)  
**AMBIENT OPERATING** -30/140°F (-35/60°C)  
**AMBIENT TEMPERATURE ERROR** - Zero  
**SENSOR** - Glass Passivated Thermistor  
**RESET** - Internal Potentiometer  
**STEM** - Bimetal: 1/4" Diameter with Fixed 1/2" NPT  
           Ind. Glass: 7/16" Tapered with 1 1/4"-18 jam nut  
**CONFORMANCE** - ASME B40.3

© Vari-angle is a registered trademark of Weiss Instruments, Inc.

5" BIMETAL DIAL			5" INDUSTRIAL		
Catalog No. 5" Vari-angle	Stem Length (incl. thread)	NPT	Catalog No. 5" Vari-angle	Stem Length (incl. thread)	Thread
5DVBM25	2 1/2"	1/2"	5DVU35	3 1/2"	1-1/4 - 18
5DVBM4	4"	1/2"	5DVU6	6"	1-1/4 - 18
5DVBM6	6"	1/2"	5DVU9	9"	1-1/4 - 18
5DVBM9	9"	1/2"	5DVU12	12"	1-1/4 - 18
5DVBM12	12"	1/2"			

# TEMPERATURE SWITCH GAUGES

The Weiss Series TSG, Temperature Switch Gauge, offers an exceptional blend of industrial strength performance with unequaled accuracy. The rugged direct drive gearless movement is highly resistant to shock and vibration, provides many years of trouble free operation even in harsh environments. The ambient temperature error is the lowest in the industry complying with the highest grade ASME B40.4 Class 4A.



Secured inside the rugged case are up to 5 (4 standard) single and double throw 10 amp switches for enabling a variety of switching functions. The thermal system is filled with inert nitrogen, is non-toxic and unaffected by the height location of the sensor bulb to the case. The Weiss TSG is an excellent choice for many types of Industrial and Process applications.

Ordering Chart on the following page.

# TEMPERATURE SWITCH GAUGES

	MODEL	DESCRIPTION	MOUNTING
I	TSG60B TSG60K TSG60S TSG60X	Bracket Mount (Standard) Back Flange Front Flange Explosion Proof (3 Switch Max.)	Surface Surface Panel Surface
II	MH SG	<b>WINDOW</b> Maximum Register Indicator (Standard) Safety Glass	
III	1S 2S 3S 4S 5S	<b>SWITCHES</b> 1 Switch 2 Switch 3 Switch 4 Switch 5 Switch	
IV	HC TB	<b>ELECTRICAL CONNECTION</b> Harness Connection Terminal Block (Standard on Explosion Proof Case)	
V	X6 X7 X8  Y6 Y7 Y8  91 92 93 94  95 95 RTD	<b>THERMAL SYSTEM</b> 3" 316SS Bulb, 302SS Spiral Interlocking Armor to 39 Ft. 1/2" NPT Compression, 316SS Bendable Extension. 3" x 3/8" Bulb 6" Extension 3" x 3/8" Bulb 12" Extension 3" x 3/8" Bulb 18" Extension  6" 316SS Bulb, 302SS Spiral Interlocking Armor 40 Ft./Up 1/2" NPT Compression, 316SS Bendable Extension. 6" x 3/8" Bulb 6" Extension 6" x 3/8" Bulb 12" Extension 6" x 3/8" Bulb 18" Extension  7/8"- 14 UNF Nut. <b>Copper Bulb</b> , 302SS Spring Armor (40 Ft. Max) 4" x .480 Bulb 5 13/16" Extension 4" x .480 Bulb 6 3/8" Extension 4" x .480 Bulb 9 11/16" Extension 4" x .480 Bulb 12" Extension  Adjustable 7/8"- 14 UNF Nut. <b>Copper Bulb</b> , 302SS Spiral Interlocking Armor. 4.0" x .480 Bulb 4.5" x .480 Bulb w/ RTD Sensor	
VI		<b>SERVICE MARKING</b> Winding Liquid Weiss	
VII		<b>CAPILLARY LENGTH</b> XX Ft. (12 Ft. Standard)	

## SPECIFICATIONS

**CASE** - Nominal 6" diameter 304 Stainless Steel Case with bayonet ring available in Bracket, Back Flange and Front Flange mounting configurations. Heavy duty cast aluminum case with threaded bulletproof window for explosion proof version.

**WINDOW** - Lexan (standard) with maximum register indicator.

**ACCURACY** 1.5% of range span.

**RANGES** - From -320 to 1000°F, standard ranges available in °F, °C and dual scale F&C, with 180 degree arc dials.

**OVERRANGE** - Up to 50% depending on range.

**PROCESS CONNECTION** - Industry standard 3/8" diameter 316 stainless steel bulb with bendable extension and with sliding union bulb fits standard 3/8 bore thermowells. Copper bulbs with standard .480" dia. bulb and 7/8"- 14 UNF thread for power transformer applications.

**CAPILLARY** - 316 SS

**CAPILLARY PROTECTION** - 302 SS Spiral Interlocking Armor to 150 Ft.  
302 SS Spring Armor to 40 Ft.

**ACTUATION** - Enhanced gas filled as per ASME B40.4 Class 4A with low volume NiSpan C® direct drive spiral bourdon tube providing very low ambient temperature effect without the need for bimetallic compensation.

**SWITCH RATING** - Up to 5 switches (4 standard) 10 amp at 125/250 Vac, non inductive: 1/4 amp at 250 VDC, non inductive.

**SWITCH CONNECTIONS** - Harness connection has 14 pin weatherproof twist lock, military grade. Explosion Proof Case has heavy duty terminal block connection as standard.

**SWITCH POINT TEST** - An internal spring mechanism allows the pointer to be rotated up the scale to test the switch actuation.

**SWITCH DIFFERENTIAL** - 2% of span.

**OFFSET ADJUSTMENT** - Standard.

## EXAMPLE FOR OBTAINING COMPLETE CATALOG NUMBER FROM CODES - SERIES TSG

CODE I (MODEL)	CODE II (WINDOW)	CODE III (SWITCHES)	CODE IV (ELEC. CONN.)	CODE V (THERMAL SYSTEM)	RANGE	CODE VI (SERVICE MRK'G)	CODE VII (CAPILLARY LGTH)
TSG60B	MH	4S	HC	X7	20-140 C	WEISS	12 FT

12FT. STANDARD

- 1) Ex: TSG60B - MH - 4S - HC - X7
- 2) Choose a Temperature Range from Range Table.
- 3) Choose a Service Marking or Weiss Nameplate only.
- 4) Capillary Length.

# DIGITAL THERMOMETERS - VAPOR TYPE

CODE	CATALOG NO.	DESCRIPTION																																								
<b>I</b>	DV25 DV35 DV45	<b>CASE SIZE</b> 2 1/2" Case 3 1/2" Case 4 1/2" Case																																								
<b>II</b>	F U B S J Q V R K Z	<b>CASE TYPE</b> <span style="float: right;"><b>Case Size</b></span> Front Flange, Flush Mount 2 1/2" U Clamp, Flush Mount 2 1/2" Back Flange, Surface Mount 2 1/2", 3 1/2", 4 1/2" Frt Flange, Bayonet Ring, Semi-Flush Mnt. 3 1/2" U Clamp, Semi-Flush Mount 3 1/2" U Clamp, Flush Mount 3 1/2" Vari-angle, <sup>®</sup> Direct Mount 3 1/2", 4 1/2" Semi-flush, Panel Mount 3 1/2", 4 1/2" Back Flange, Bayonet Ring, Stl. Steel 3 1/2", 4 1/2" Adjustable Bracket, Remote Mnt, Stl. Steel 3 1/2", 4 1/2"																																								
<b>III</b>	A B L	<b>CASE CONNECTION</b> Adjustable Back Connection Lower Connection																																								
<b>IV</b>	3 4 5 8 9	<b>CASE WINDOW</b> 3 Snap in Lexan with "O" Ring (F,U,Q,V,B,R) 4 Stainless Steel Ring & Glass (2 1/2" U,F - 3 1/2" J,K,S) 5 Chrome Plated Brass, Glass (Q case only) 8 Crimped Ring, Stl. Steel, Plastic or Glass-Waterproof (U) 9 Threaded One Piece Lexan (F, U)																																								
<b>V</b>	0 1 3 4 6	<b>THERMAL SYSTEM</b> <table style="width: 100%; border-collapse: collapse;"> <thead> <tr> <th style="width: 10%;">Bulb Type</th> <th style="width: 15%;">Bulb Material</th> <th style="width: 15%;">Wire Protection</th> <th style="width: 15%;">Max System Length</th> </tr> </thead> <tbody> <tr> <td>0 Union</td> <td>Copper</td> <td>(Vari-angle only)</td> <td>—</td> </tr> <tr> <td>1 Plain</td> <td>Copper</td> <td>None(Wire)</td> <td>5 Ft.</td> </tr> <tr> <td>3 Plain</td> <td>316 S.S.</td> <td>Interlock Armor</td> <td>25Ft.</td> </tr> <tr> <td>4 Union</td> <td>Copper</td> <td>Interlock Armor</td> <td>25Ft.</td> </tr> <tr> <td>6 Union</td> <td>316 S.S.</td> <td>Interlock Armor</td> <td>25Ft.</td> </tr> </tbody> </table>	Bulb Type	Bulb Material	Wire Protection	Max System Length	0 Union	Copper	(Vari-angle only)	—	1 Plain	Copper	None(Wire)	5 Ft.	3 Plain	316 S.S.	Interlock Armor	25Ft.	4 Union	Copper	Interlock Armor	25Ft.	6 Union	316 S.S.	Interlock Armor	25Ft.																
Bulb Type	Bulb Material	Wire Protection	Max System Length																																							
0 Union	Copper	(Vari-angle only)	—																																							
1 Plain	Copper	None(Wire)	5 Ft.																																							
3 Plain	316 S.S.	Interlock Armor	25Ft.																																							
4 Union	Copper	Interlock Armor	25Ft.																																							
6 Union	316 S.S.	Interlock Armor	25Ft.																																							
<b>VI</b>	1 2 3 6 8*	<b>BULB SELECTION</b> <table style="width: 100%; border-collapse: collapse;"> <thead> <tr> <th rowspan="2"></th> <th colspan="2">Thermal System Union Conn.</th> <th colspan="2">Thermal System Plain Bulb</th> <th rowspan="2">Max. System Len.</th> </tr> <tr> <th>Dia.</th> <th>Length</th> <th>Dia.</th> <th>Length</th> </tr> </thead> <tbody> <tr> <td>1</td> <td>7/16</td> <td>2.5"</td> <td>N.A.</td> <td>N.A.</td> <td>25Ft.</td> </tr> <tr> <td>2</td> <td>7/16</td> <td>3.4"</td> <td>3/8</td> <td>3.4</td> <td>25Ft.</td> </tr> <tr> <td>3</td> <td>7/16</td> <td>5.4"</td> <td>3/8</td> <td>5.9</td> <td>25Ft.</td> </tr> <tr> <td>6</td> <td>N.A.</td> <td>N.A.</td> <td>3/8</td> <td>2.5</td> <td>25Ft.</td> </tr> <tr> <td>8*</td> <td>N.A.</td> <td>N.A.</td> <td>1/4</td> <td>1.8</td> <td>5Ft.</td> </tr> </tbody> </table>		Thermal System Union Conn.		Thermal System Plain Bulb		Max. System Len.	Dia.	Length	Dia.	Length	1	7/16	2.5"	N.A.	N.A.	25Ft.	2	7/16	3.4"	3/8	3.4	25Ft.	3	7/16	5.4"	3/8	5.9	25Ft.	6	N.A.	N.A.	3/8	2.5	25Ft.	8*	N.A.	N.A.	1/4	1.8	5Ft.
	Thermal System Union Conn.			Thermal System Plain Bulb		Max. System Len.																																				
	Dia.	Length	Dia.	Length																																						
1	7/16	2.5"	N.A.	N.A.	25Ft.																																					
2	7/16	3.4"	3/8	3.4	25Ft.																																					
3	7/16	5.4"	3/8	5.9	25Ft.																																					
6	N.A.	N.A.	3/8	2.5	25Ft.																																					
8*	N.A.	N.A.	1/4	1.8	5Ft.																																					
<b>VII</b>	1 2 3 4 7 9 *N *S	<b>PROCESS CONNECTION FITTING</b> 1 Union Connection 1/2" NPT 2 Union Connection 3/4" NPT 3 Separable Socket 1/2" NPT 4 Separable Socket 3/4" NPT 7 Air Duct Flange, Union Conn., Aluminum only 9 Plain bulb, no fitting *N Nickel-Plated Brass *S Stainless Steel																																								
<b>VIII</b>	1 2 3 5 0 *B *S	<b>PROCESS CONNECTION MATERIAL</b> 1 Brass 2 304 Stainless Steel 3 316 Stainless Steel 5 Aluminum (Air Duct Flange only) 0 None – Plain Bulb *B Brass *S Stainless Steel *only with No. 8 Bulb.																																								
<b>IX</b>		<b>SYSTEM LENGTH SPECIFYING</b> 9A - Use 2 digits: EX. 05, 10, 25 for length required. 9B - Use FT for feet.																																								

**CASE SIZES** - 2 1/2", 3 1/2", 4 1/2" Stainless Steel  
**RANGE** -50 to 300°F (-45 to 150°C) with F/C switch

**ACCURACY** - 1%

**WINDOW** - Acrylic / Glass

**LUX RATING** - 10 Lux (one foot candle)

**DISPLAY** - 1/2" LCD Digits

**STEM** - 7/16" Diameter 5/8"-18 Jam Nut for NPT fittings  
 3/8" Diameter for Plain bulbs

**RESET** - Internal Potentiometer

**RESOLUTION** - 1/10% between -19.9/199.9°F (-20/93°C)

**AMBIENT OPERATING** -30/140°F (-35/60°C)

**AMBIENT TEMPERATURE ERROR** - Zero

**SENSOR** - Glass Passivated Thermistor

**CONFORMANCE** - ASME B40.4



DV45VA3 - Vari-angle, Direct Mount

DV45BL3 - Back Flange, Lower Mnt.



DV45BB3 - Back Flange, Back Mount



DV45RB3 - Semi-flush, Panel Mnt.



DV35QB5 - U-Clamp, Panel Mount



# DIGITAL THERMOMETERS - GAS TYPE

CODE	CATALOG NO.	DESCRIPTION																																																		
<b>I</b>	DG35 DG45	<b>CASE SIZE</b> 31/2" Case 41/2" Case																																																		
<b>II</b>	B E F S U V K	<b>CASE TYPE &amp; MATERIAL</b> B Back Flange, Aluminum - 41/2" only E Turret, Polypropylene* - 41/2" only F Front Flange, Aluminum - 41/2" only S Front Flange, Semi Flush, Bayonet Ring, St. St.- 31/2", 41/2" U U-Clamp, Bayonet Ring, Stainless Steel - 41/2" only V Vari-angle® Stainless Steel - 41/2" only K Back Flange, Bayonet Ring, St. St.- 31/2", 41/2"  *Flush Mounting Ring available as Accessory																																																		
<b>III</b>	B L A	<b>CASE CONNECTION</b> B Back Connection L Lower Connection - (Not available on 31/2" K Case) A Adjustable																																																		
<b>IV</b>	3 4 5	<b>CASE WINDOW</b> 3 Acrylic 4 Glass 5 Shatterproof Glass - 41/2" only																																																		
<b>V</b>	0 1 X	<b>THERMAL SYSTEM</b> <table style="width: 100%; border-collapse: collapse;"> <thead> <tr> <th style="width: 15%;">Bulb Type</th> <th style="width: 15%;">Bulb Material</th> <th style="width: 15%;">Capillary Material</th> <th style="width: 15%;">Capillary Protection</th> </tr> </thead> <tbody> <tr> <td>0 Vari-angle</td> <td>316 S.S.</td> <td>—</td> <td>—</td> </tr> <tr> <td colspan="4">(Furnished with 1/2" NPT S.S. Swivel)</td> </tr> <tr> <td>1 Plain</td> <td>316 S.S.</td> <td>316 S.S.</td> <td>S.S. Spiral Armor</td> </tr> <tr> <td>X Sliding Union</td> <td>316 S.S.</td> <td>316 S.S.</td> <td>S.S. Spiral Armor</td> </tr> </tbody> </table>	Bulb Type	Bulb Material	Capillary Material	Capillary Protection	0 Vari-angle	316 S.S.	—	—	(Furnished with 1/2" NPT S.S. Swivel)				1 Plain	316 S.S.	316 S.S.	S.S. Spiral Armor	X Sliding Union	316 S.S.	316 S.S.	S.S. Spiral Armor																														
Bulb Type	Bulb Material	Capillary Material	Capillary Protection																																																	
0 Vari-angle	316 S.S.	—	—																																																	
(Furnished with 1/2" NPT S.S. Swivel)																																																				
1 Plain	316 S.S.	316 S.S.	S.S. Spiral Armor																																																	
X Sliding Union	316 S.S.	316 S.S.	S.S. Spiral Armor																																																	
<b>VI</b>	1  4 6 9 X	<b>BULB SELECTION</b> <b>Plain Bulb - Remote</b> <table style="width: 100%; border-collapse: collapse;"> <thead> <tr> <th style="width: 10%;">Dia.</th> <th style="width: 10%;">Length</th> <th style="width: 80%;">Description</th> </tr> </thead> <tbody> <tr> <td>3/8</td> <td>2.5" (Active)</td> <td>+ 10" Rigid Ext.</td> </tr> </tbody> </table> <table style="width: 100%; border-collapse: collapse;"> <thead> <tr> <th colspan="2" style="width: 30%;">Vari-angle bulb</th> <th colspan="2" style="width: 70%;">To fit Thermowell with:</th> </tr> <tr> <th style="width: 10%;">Dia.</th> <th style="width: 10%;">Length</th> <th style="width: 30%;">OA Len.</th> <th style="width: 30%;">U Insertion</th> </tr> </thead> <tbody> <tr> <td>3/8</td> <td>4"</td> <td>4.25"</td> <td>2.5"</td> </tr> <tr> <td>3/8</td> <td>6"</td> <td>6.25"</td> <td>4.5"</td> </tr> <tr> <td>3/8</td> <td>9"</td> <td>9.25"</td> <td>7.5"</td> </tr> <tr> <td>3/8</td> <td>12"</td> <td>12.25"</td> <td>10.5"</td> </tr> </tbody> </table> <table style="width: 100%; border-collapse: collapse;"> <thead> <tr> <th colspan="5" style="width: 100%;">Sliding union connection bulb with bendable extension</th> </tr> <tr> <th style="width: 10%;">Dia.</th> <th style="width: 10%;">Length</th> <th style="width: 10%;">Ext.</th> <th style="width: 20%;">Union Insertion Len.</th> <th style="width: 50%;">Thermowell - U</th> </tr> </thead> <tbody> <tr> <td>3/8</td> <td>2.5" (Active)</td> <td>12"</td> <td>3 to 12"</td> <td>2.5 to 10.5"</td> </tr> <tr> <td>3/8</td> <td>2.5" (Active)</td> <td>18"</td> <td>3 to 18"</td> <td>2.5 to 16.5"</td> </tr> </tbody> </table>	Dia.	Length	Description	3/8	2.5" (Active)	+ 10" Rigid Ext.	Vari-angle bulb		To fit Thermowell with:		Dia.	Length	OA Len.	U Insertion	3/8	4"	4.25"	2.5"	3/8	6"	6.25"	4.5"	3/8	9"	9.25"	7.5"	3/8	12"	12.25"	10.5"	Sliding union connection bulb with bendable extension					Dia.	Length	Ext.	Union Insertion Len.	Thermowell - U	3/8	2.5" (Active)	12"	3 to 12"	2.5 to 10.5"	3/8	2.5" (Active)	18"	3 to 18"	2.5 to 16.5"
Dia.	Length	Description																																																		
3/8	2.5" (Active)	+ 10" Rigid Ext.																																																		
Vari-angle bulb		To fit Thermowell with:																																																		
Dia.	Length	OA Len.	U Insertion																																																	
3/8	4"	4.25"	2.5"																																																	
3/8	6"	6.25"	4.5"																																																	
3/8	9"	9.25"	7.5"																																																	
3/8	12"	12.25"	10.5"																																																	
Sliding union connection bulb with bendable extension																																																				
Dia.	Length	Ext.	Union Insertion Len.	Thermowell - U																																																
3/8	2.5" (Active)	12"	3 to 12"	2.5 to 10.5"																																																
3/8	2.5" (Active)	18"	3 to 18"	2.5 to 16.5"																																																
<b>VII</b>		<b>SYSTEM LENGTH SPECIFYING</b> 9A - Use 2 digits: EX. 05, 10, 25 for length required. 9B - Use FT for feet.																																																		

**CASE SIZES** - 3 1/2" and 4 1/2"  
**RANGE** -50 to 300°F (-45 to 150°C) with F/C switch  
**ACCURACY** - 1%  
**WINDOW** - Acrylic / Glass / Shatterproof Glass  
**LUX RATING** - 10 Lux (one foot candle)  
**DISPLAY** - 1/2" LCD Digits  
**RESOLUTION** - 1/10% between -19.9/199.9°F (-20/93°C)  
**AMBIENT OPERATING** -30/140°F (-35/60°C)  
**AMBIENT TEMPERATURE ERROR** - Zero  
**SENSOR** - Glass Passivated Thermistor  
**RESET** - Internal Potentiometer  
**STEM** - 3/8" Diameter  
     Sliding Union (1/2" NPT) on bendable extension  
     Direct Mount Vari-angle (1/2" NPT)  
     Plain Bulbs  
**CONFORMANCE** - ASME B40.4

DG45BL4  
Back Flange, Surface Mount, Aluminum



DG45UB4  
U-Clamp, Bayonet Ring, St. St.



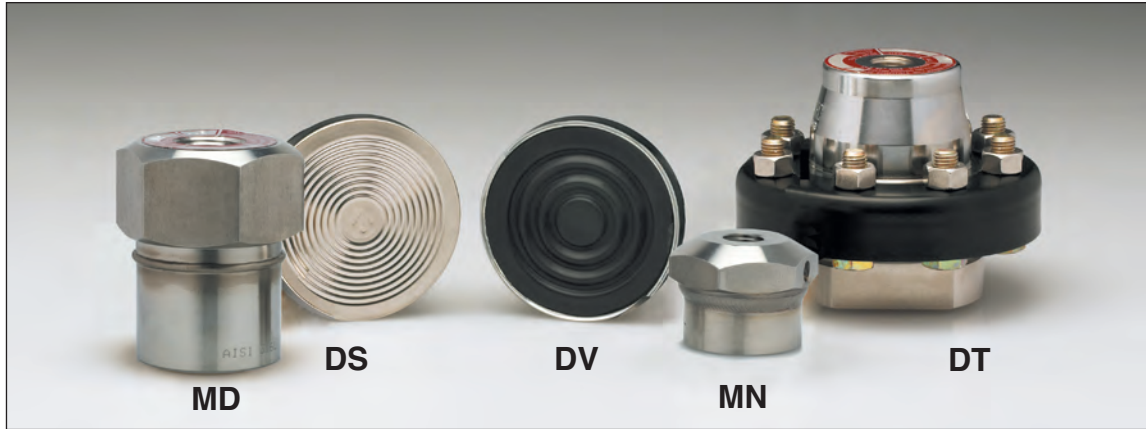
DG45KB4  
Back Flange, Bayonet Ring, St. St.



DG45VA4 - Vari-angle, St. St.



# DIAPHRAGM SEALS



The Weiss line of Diaphragm Seals, in conjunction with Weiss pressure indicators, offers instrumentation that's rugged and carefully calibrated to withstand the most severe industrial, process or OEM service. Our diaphragm seals are available in a variety of metal housing materials and process connection sizes to fit most requirements.

## Series DS/DV/DT

**Max. Pressure/Temperature Limits:** Vacuum thru 2300 psi to 100°F, 1500psi to 200°F, 600 psi to 400°F.

**Top Housing:** 1/4" or 1/2" NPT (304 S.S. standard)

**Diaphragm:** 316 L S.S. welded, Viton\* or Teflon\*\*

**Nuts and Bolts:** Stainless Steel

**Lower Housing:** 1/4" thru 1" NPT

\* Viton is furnished for Vacuum, 30 psi and Compound 30-0-15psi ranges.  
\*\* Teflon is available for ranges to 200 psi.

Ranges 0-30" HG, 30-0-15 psi, 30-0-30 psi. Silicone Filling only.

**Ordering Code:** \_\_\_ -DS\_\_\_ - \_\_\_      DS=316SS      Ex: 25-DS12-50  
                  A -DV B C D      DV=Viton  
                  -DT            DT=Teflon

**A. Top Connection**

25 = 1/4" NPT  
50 = 1/2" NPT

**B. Flushing/No Flushing**

0 = No flushing conn.  
1 = Flushing conn.

**C. Lower Housing Mat'l**

2 = 316 SS

**D. Process Conn.**

25 = 1/4" NPT  
50 = 1/2" NPT  
75 = 3/4" NPT  
10 = 1" NPT

**LIQUID FILLINGS:** Food-Grade Glycerine • Silicone DC200

The Series MD/MN is a compact, lightweight, economical diaphragm seal. The upper and lower housing, as well as the diaphragm, are type 316 stainless steel - all welded together making a one piece integral unit, ideally suited for those applications where space is a factor.

The use of a hermetically sealed, liquid filled pressure gauge in conjunction with either a MD or MN seal protects the indicating gauge from both the process medium and atmospheric conditions, as well as reduces pointer fluctuations due to vibration and pulsation.

## Series MD

**Opr. Pressure:** 60 psi thru 1000 psi

**Temperature Limits:** -5 to 300°F

**Top Connection:** 1/4" or 1/2" NPT

**Process Connection:** 1/4", 1/2" or 3/4" NPT

**Ordering Code:** \_\_\_ -MDN2-\_\_\_  
                  A                    B  
                  Ex: 25-MDN2-50

**A. Top Connection**

25 = 1/4" NP  
50 = 1/2" NPT

**B. Process Conn.**

25 = 1/4" NPT  
50 = 1/2" NPT  
75 = 3/4" NPT

## Series MN

**Opr. Pressure:** 100 psi thru 1000 psi

**Temperature Limits:** -5 to 300°F

**Top Connection:** 1/4" NPT

**Process Connection:** 1/4" or 1/2" NPT

**Ordering Code:** 25-MNN2-\_\_\_  
  X  
  Ex: 25-MNN2-25

**X. Process Connection**

25 = 1/4" NPT  
50 = 1/2" NPT

# GAUGE ACCESSORIES



**TABLE 1 - PRESSURE SNUBBERS**

STYLE CODE	HOUSING MATERIAL CODE	HOUSING MATERIAL	NPT CODE	NPT	PSI RATING AT 70°F
PSN	B	Brass	25	1/4"	1,500 psi
	S	303 S.S.	50	1/2"	1,500 psi

**TABLE 2**

POROSITY SYMBOL CODE	TYPE OF SERVICE	PORE OPENING MEAN	PORE OPENING MAX.
E	Water and Light Oil (30 to 225 SSU*)	.0013	.0025
D	Oil (225 to 500 SSU)	.0025	.005
G	Air and other Gases	.0004	.0009

\*SSU - Saybolt Seconds Universal Viscosity

For complete Catalog No. use Coding from Table 1 & 2. **EX: PSN-B-25-E** = Brass Housing 1/4" NPT, E Porosity Disc.

## NEEDLE VALVES

CAT. NO.	SIZE	MATERIAL	RATING
25NVBR	1/4" NPTF X 1/4" NPTF	Brass	600 psi & 300°F
25NVSS	1/4" NPTF X 1/4" NPTF	304S.S.	4000 psi & 150°F
50NVBR	1/2" NPTF X 1/2" NPTF	Brass	600 psi & 300°F
50NVSS	1/2" NPTF X 1/2" NPTF	304S.S.	4000 psi & 150°F

## SYPHONS

CAT. NO.	SIZE	MATERIAL	RATING
SY-14S	1/4" NPTM x 1/4" NPTM	Iron	300 psi & 300°F
SY-14B	1/4" NPTM x 1/4" NPTM	Brass	400 psi & 300°F

**NOTE:** Angle Syphon available 1/4" NPTM x 1/4" NPTM Brass - **Model ASY-14B** Iron - **Model ASY-14S**  
All Syphons Schedule 40. Schedule 80 available on request.

## GAUGE COCKS

CAT. NO.	SIZE	MATERIAL	RATING
TC-14	1/4" NPTF x 1/4" NPTF	Brass	200 psi Hydraulic
TC-34	3/4" NPTF x 3/4" NPTF	Brass	200 psi Hydraulic
MTC-14	1/4" NPTF x 1/4" NPTM	Brass	200 psi Hydraulic
LC-14	1/4" NPTF x 1/4" NPTF	Brass	200 psi Hydraulic
LC-12	1/2" NPTF x 1/2" NPTF	Brass	200 psi Hydraulic
BTC-12	1/2" NPTF x 1/2" NPTF	Forged Brass	150 lb. Steam
BTC-14	1/4" NPTF x 1/4" NPTF	Forged Brass	150 lb. Steam
BMTC-14	1/4" NPTF x 1/4" NPTM	Forged Brass	150 lb. Steam
BLC-12	1/2" NPTF x 1/2" NPTF	Forged Brass	150 lb. Steam
BLC-14	1/4" NPTF x 1/4" NPTF	Forged Brass	150 lb. Steam

## BALL VALVES

CAT. NO.	SIZE	MATERIAL	RATING
BV25	1/4" NPTF x 1/4" NPTF	Chrome Plated Brass	450 psi & 250°F
BV50	1/2" NPTF x 1/2" NPTF	Chrome Plated Brass	450 psi & 250°F
MBV25	1/4" NPTF x 1/4" NPTM	Chrome Plated Brass	450 psi & 250°F

# TEMP/PRESSURE TEST PLUGS

Weiss Temperature/Pressure Plugs allows for quick, efficient and accurate testing of hydronic pipe lines throughout HVAC systems. Offered in both norden (blue cap) for hot and chilled water and neoprene (red cap) for natural gas. Our plugs are consistently rated at 1000 psi. The self-sealing core insures long life and continuous service.



CAT. NO.	DESCRIPTION	BODY & CAP	IDN
BP25-NR	1/4" NPT Norden	Brass	90101
BP25-NP	1/4" NPT Neoprene	Brass	90102
BP50-NR	1/2" NPT Norden	Brass	90103
BP50-NP	1/2" NPT Neoprene	Brass	90104
BP25L-NR	1/4" NPT Norden w/ 1 3/4" Lag	Brass	90105
BP25L-NP	1/4" NPT Neoprene w/ 1 3/4" Lag	Brass	90106

CAT. NO.	ACCESSORIES	IDN
TPK	Test Kit	90120
GA18	Gauge Adapter	90125
PT220	1" Dial Pocket Test 0/220°F	90130
PT125	1" Dial Pocket Test 0/125°F	90110
TL25-030-4L	2 1/2" Gauge 0-30 psi	90131
TL25-160-4L	2 1/2" Gauge 0-160 psi	90134



BP25-NP

BP50-NR

BP25L-NR

Send for Weiss Literature to match your specific application.



**WEISS INSTRUMENTS, LLC.**  
905 WAVERLY AVE., HOLTSVILLE, NEW YORK 11742  
TEL: 631-207-1200 • FAX: 631.207.0900  
[www.weissinstruments.com](http://www.weissinstruments.com)

Distributed by:



Old World Craftsmanship . . . NEW WORLD TECHNOLOGY  
Sales Representatives in all Principal Cities • Since 1882