

# WEISS INSTRUMENTS

## Pressure Gauges for Potable Water Applications

### Thermowells

### Gauge Accessories



## SPECIFICATIONS – 4CTSLF

**DIAL SIZE** - 4 1/2"

**CASE** - Drawn stainless steel, with push-in Lexan window.

**TUBE** - Phosphor bronze.

**SOLDER CONNECTION** - Lead Free.

**SOCKET** < 0.25% Lead Free Brass

**CERTIFICATION** - UL in accordance with NSF/ANSI 372

**CERTIFICATION NR** - 20131004-MH59893

**CONNECTION** - 1/4" NPT Bottom

**DIAL** - White coated metal lithographed with black graduations lines and numerals.

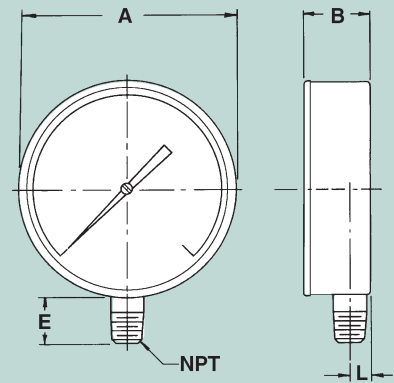
**POINTER** - Slotted adjustable.

**ACCURACY** - 1% ANSI-ASME B40.1 Grade 1A.

**OPERATING TEMPERATURE**

Ambient: -40°F to 140°F (-40°C to 60°C)

Media: 140°F (+60°C) Maximum



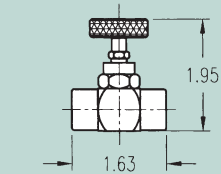
SERIES		A	B	E	L	NPT
4CTSLF	INCH	4.62	1.12	1.062	.437	1/4"
	MM	117.3	28.4	26.9	11.09	

## HVAC PRESSURE GAUGES - WEISS SERIES 4CTSLF

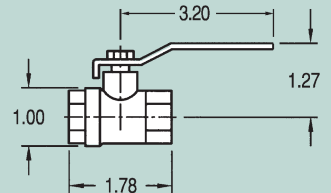
CAT. NO.	RANGES	ANSI/ASME
4CTSLF	0 - 30 PSI	0-160 PSI
	0 - 60 PSI	0-200 PSI
	0-100 PSI	0-300 PSI
		B40.1

## NEEDLE & BALL VALVES FOR HVAC PRESSURE GAUGES

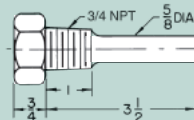
CAT. NO.	SIZE	MATERIAL	RATING
BLC-14LF (Ball Valve)	1/4" FNPT x 1/4" FNPT	Lead Free Brass	600 psi / 300°F
25NVBRLF (Needle Valve)	1/4" FNPT x 1/4" FNPT	Lead Free Brass	600 psi / 300°F



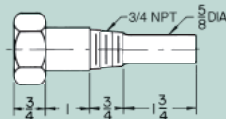
25NVBRLF



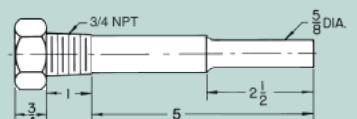
BLC-14LF



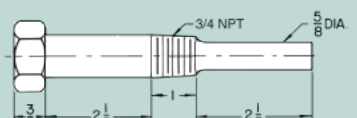
E35-75BSLF



ESS35-75BSLF



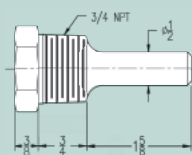
ER6-75BSLF



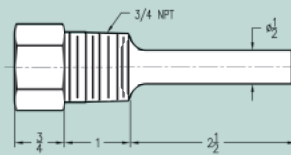
EN6-75BSLF

## LEAD FREE THERMOWELLS FOR INDUSTRIAL GLASS, BIMETAL DIAL AND DIGITAL THERMOMETERS

CAT NO.	LENGTH	APPLICABLE TO THERMOMETER ITEMS	ANSI/ASME
E35-75BSLF	4 1/4	9VU35, A9VU35, DVU35	B40.2
ESS35-75BSLF	4 1/4	9VU35, A9VU35, DVU35	B40.2
ER6-75BSLF	6 3/4	9VU6, A9VU6, DVU6	B40.2
EN6-75BSLF	6 3/4	9VU6, A9VU6, DVU6	B40.2
B25-75BSLF	2 3/4	5VBM25, 3VBM25	B40.2
B35-75BSLF	4 1/4	5VBM4, 3VBM4	B40.2



B25-75BSLF



B35-75BSLF

LFG-10/13