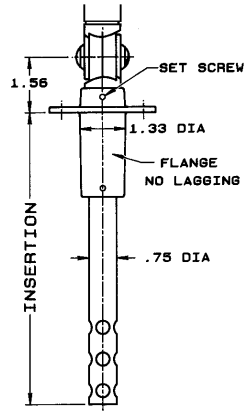


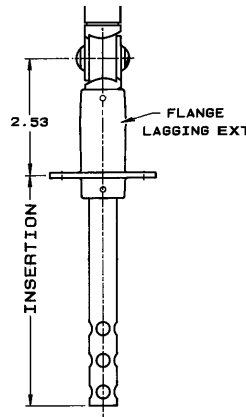
**CASE:** Modern V-shape design with parts molded of GE Valox® polyester in black textured finish. Heavy glass protected front firmly secured against rattles by spring action. **STEM:** Perforated Aluminum. **LOCKING DEVICE:** A hand rotatable friction lock with the angle adjusting screw work independently to provide a full 360° positioning of thermometer case and stem. **ADJUSTABLE JOINT:** GE Valox finished to match case. **ACCURACY:** Within 1% of scale range. Silicone shock mounted for lasting durability. **SCALE:** White coated aluminum with permanently baked bold black markings. **FILL:** Blue liquid.

© Valox is a registered trademark of the General Electric Co.  
 © Vari-angle is a registered trademark of Weiss Instruments, Inc.

| Scale Size | X       |
|------------|---------|
| 7"         | 9 3/4"  |
| 9"         | 11 3/4" |



**Air Duct Stem**



| VARI-ANGLE INDUSTRIAL THERMOMETERS |          |             |           |       |     |
|------------------------------------|----------|-------------|-----------|-------|-----|
| QTY.                               | CAT. NO. | SCALE LGTH. | STEM LGTH | RANGE | TAG |
|                                    | 9VD6     | 9"          | 6"        |       |     |

| °F RANGES  | SCALE DIVISION |
|------------|----------------|
| 40-0-110°F | 2°             |
| 0-120°F    | 1°             |
| 0-160°F    | 2°             |
| 30-180°F   | 2°             |
| 30-240°F   | 2°             |
| 30-300°F   | 2°             |
| 50-400°F   | 5°             |
| 50-550°F   | 5°             |

NOTE: Dual and Centigrade Scales available.

CUSTOMER \_\_\_\_\_  
 PROJECT \_\_\_\_\_  
 ENGINEER \_\_\_\_\_  
 PRO or P.O. NO. \_\_\_\_\_



**WEISS INSTRUMENTS, INC.**  
 HOLTSTVILLE, NEW YORK 11742

DESCRIPTION: **Air Duct Stem**  
**Vari-angle® Industrial Glass Thermometer**  
 Full Conformance with Fed Spec. GG-T-321D

DRAWN BY: \_\_\_\_\_ DATE: \_\_\_\_\_ DRAWING: \_\_\_\_\_