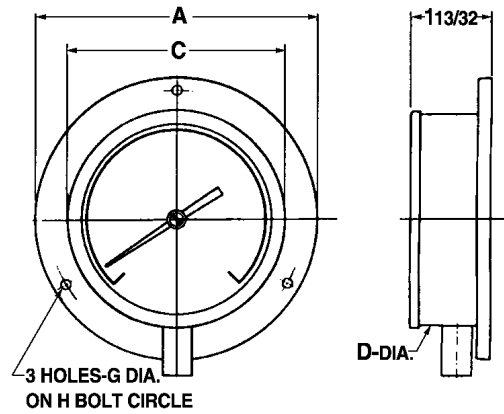


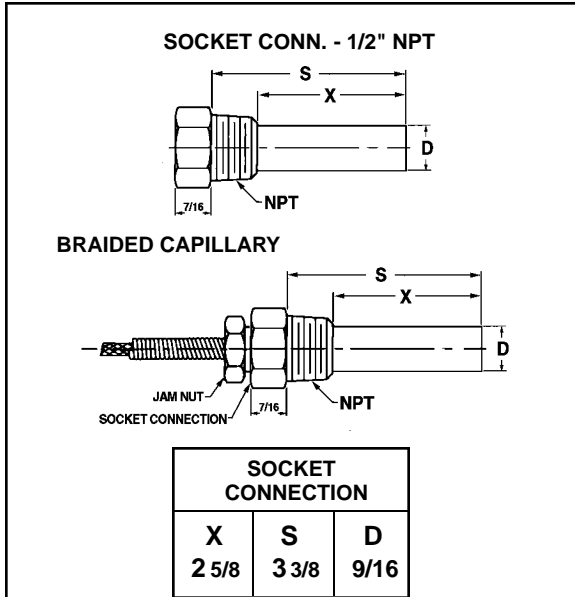
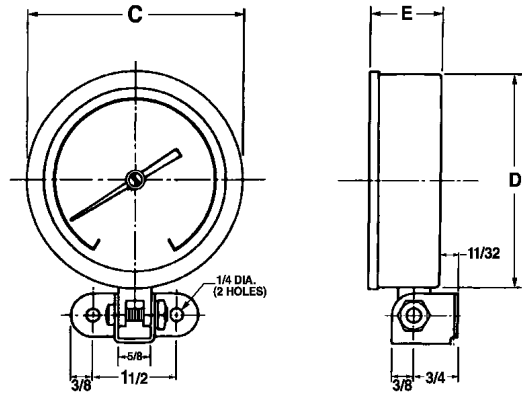
# SPECIFICATIONS

DIAL SIZE - 3 1/2 and 4 1/2 inch.  
CASE & RING - drawn stainless steel case with snap-in "O" ring gasketed clear lexan.  
CASE STYLES - to accommodate wall or panel mounting (as shown).  
DIAL - white coated aluminum with black markings.  
POINTER - slotted adjustable type.  
BOURDON TUBE - phosphor bronze.  
THERMAL BULB & LINE ASSEMBLY - copper.  
PROCESS CONN. FITTING - separable socket.  
ACCURACY - one scale division throughout range.

**BL Case - Wall Mount Bottom Connected**



**ZL Case - Adjustable Bracket Mount**



DIAL SIZE	A	C	D	E	G	H
3 1/2"	4 3/4	3 11/16	3 19/32	1 1/4	5/32	4 5/16
4 1/2"	5 7/8	4 11/16	4 19/32	1 1/4	7/32	5 3/8

°F RANGES
40-0-110°F
20-0-100°F
0-150°F
0-180°F
40-240°F
30-300°F
100-350°F

QTY.	DIAL SIZE	CASE STYLE	RANGE	CAPILLARY LENGTH*	TAG

NOTE: Dual Scales available.

\*Distance between Indicating Head and Socket.

CUSTOMER \_\_\_\_\_  
PROJECT \_\_\_\_\_  
ENGINEER \_\_\_\_\_  
PRO or P.O. NO. \_\_\_\_\_



WEISS INSTRUMENTS, INC.  
HOLTSVILLE, NEW YORK 11742

DESCRIPTION:

**Remote Reading Vapor Actuated Dial Thermometers**

DRAWN BY: \_\_\_\_\_ DATE: \_\_\_\_\_ DRAWING: \_\_\_\_\_