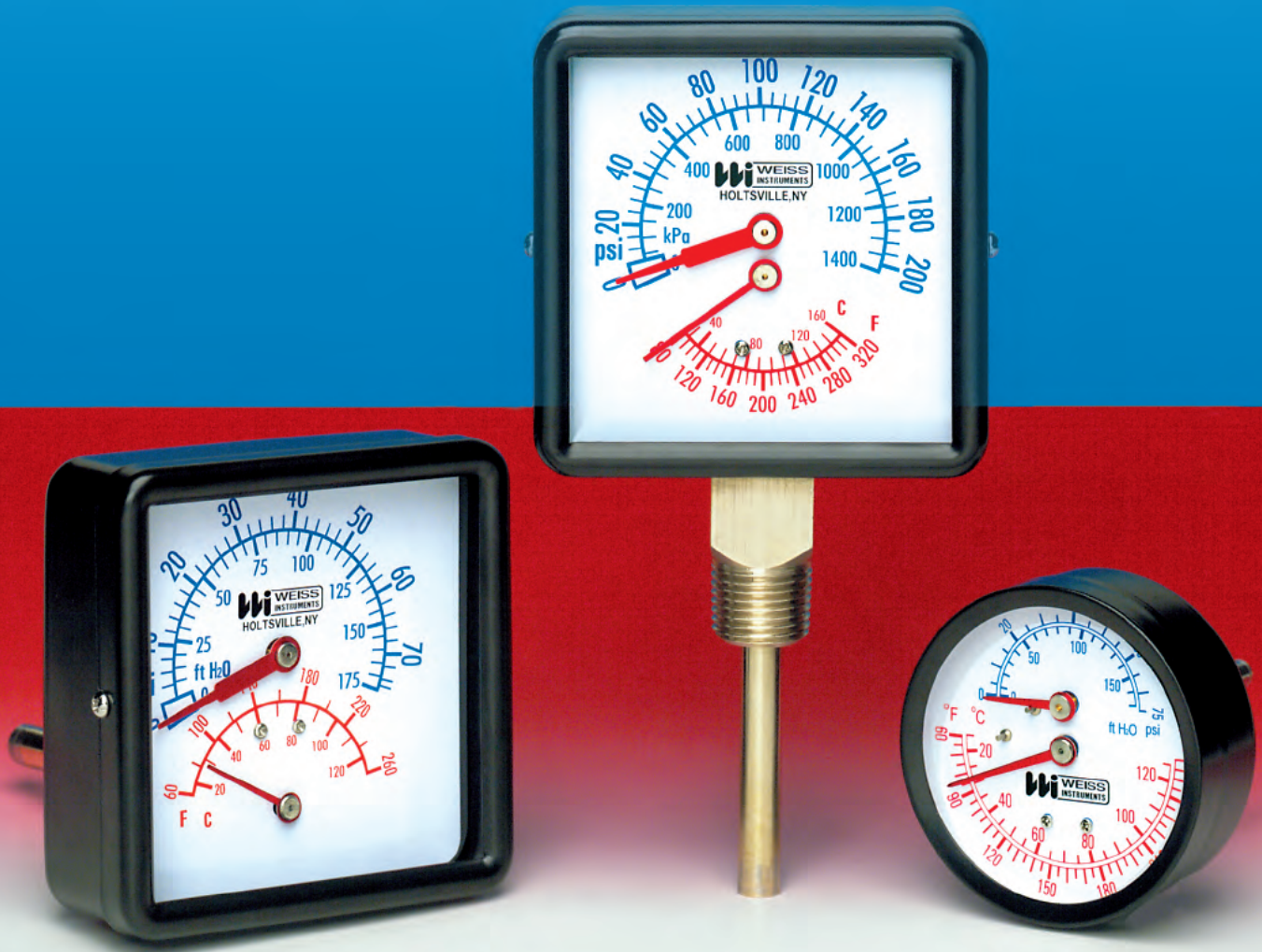


# WEISS INSTRUMENTS

## TRI-O-METERS



The Weiss TRI-O-METER is designed for use on all types of hot water heating systems. One instrument indicates water pressure, water temperature and system head in feet of water. The TRI-O-METER is available in two dial sizes, a 3 1/2" square dial with 1/2" NPT in lower or rear connection. And a 2 1/2" round dial with 1/4" NPT rear connection. Bold markings and colors on a white dial ensure easy readability and a good looking addition to any installation.

## SPECIFICATIONS

**DIAL SIZE** 2 1/2" and 3 1/2"

**CASE** Black epoxy coated steel with glass window.

**CONNECTION** Brass NPT fitting with brass sensor bulb.

**PRESSURE & TEMPERATURE ELEMENT** Phosphor bronze.

**SYSTEM ACCURACY** Pressure /Altitude  $\pm 2\%$  of Span in middle half of range,  $\pm 3\%$  of Span elsewhere. Temperature  $\pm 3\%$  of Span over entire range.

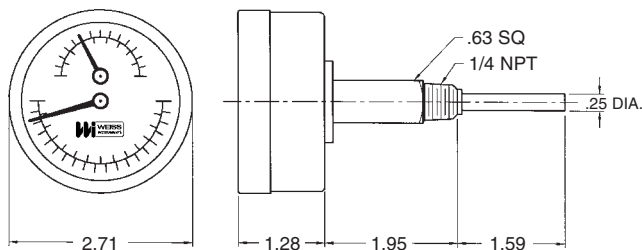
**RANGES Series C** 0-75psi & ft. of H<sub>2</sub>O, 60-260°F&C.

**Series H** 0-200psi & kPa, 80-320°F&C.

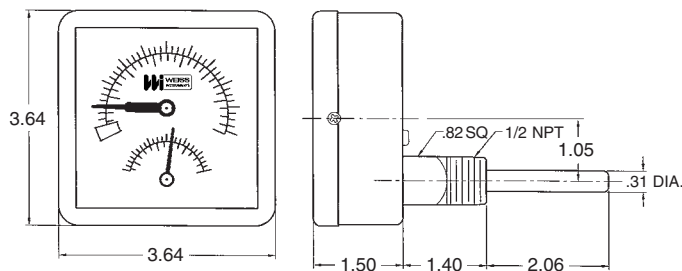
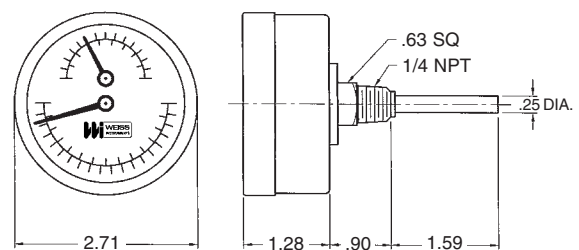
### CATALOG NUMBERS:

CTP25R	1/4" NPT Rear
CTP25RX	1/4" NPT Rear x 2" extension
CTP40RSX	1/2" NPT Rear
CTP40L	1/2" NPT Lower
HTP40RSX	1/2" NPT Rear
HTP40L	1/2" NPT Lower

**CTP25RX**  
Extension

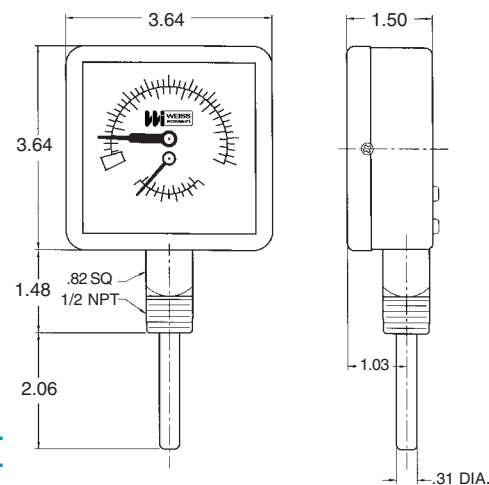


**CTP25R**



**CTP40RSX**  
**HTP40RSX**

**CTP40L**  
**HTP40L**



CTP-5/07