

WEISS INSTRUMENTS

Fire Protection Sprinkler Service Gauges



The Weiss Fire Protection Sprinkler Gauges are Underwriters Laboratory listed and Factory Mutual approved for fire protection sprinkler service. The 0-300 psi pressure range is used on "wet" systems where water is available to the sprinkler heads. The 0-80 retard to 250 psi pressure range is used on dry systems where the lines are filled with air pressure until system activation.

SPECIFICATIONS

DIAL SIZE - 3 1/2"

CASE - ABS (POLYCARBONATE)

WINDOW - POLYCARBONATE PUSH-IN

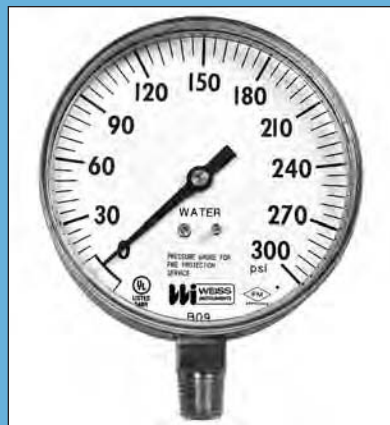
ACCURACY - ASME B40.1 Grade 3-2-3%

TUBE & SOCKET - BRONZE / BRASS

CONNECTION - 1/4" NPT LOWER

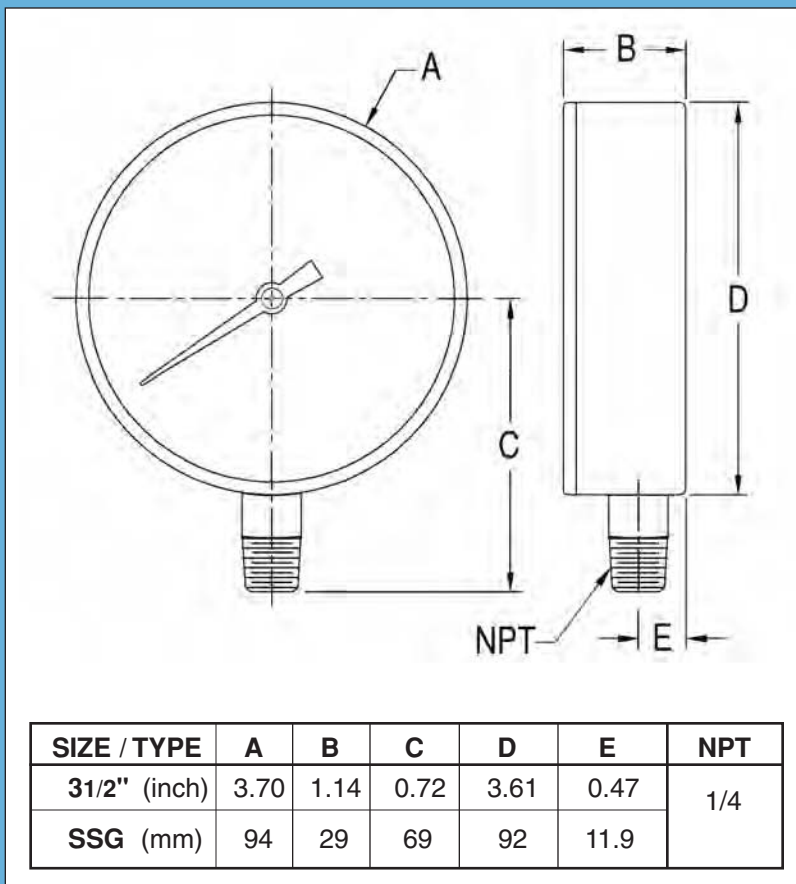
APPROVALS - UL / FACTORY MUTUAL

OPERATING TEMP -40/150°F



Zero Zone indication, a standard feature on these gauges, reduces the potential risk of installing a damaged gauge on your equipment.

CAT NO.	RANGE
SSG-300-4L	0-300 psi (Water)
SSG-080-4L	0-80 Retard to 250 psi (Air)



SSG-7/09