

CASE: Modern V-shape design, high pressure die cast aluminum in black textured finish. Heavy glass protected front firmly secured against rattles by spring action. **STEM:** For 3 1/2" stems only and ranges up to and including 300°F, the stem material is a precision die cast Zamac alloy. For ranges above 300°F, bulb chamber is a precision machined aluminum alloy with copper plated steel stem extension. *For Separable Socket connections only.* **LOCKING DEVICE:** A hand rotatable friction lock with the angle adjusting screw work independently to provide a full 360° positioning of thermometer case and stem. **ADJUSTABLE JOINT:** Die cast aluminum finished to match case. **ACCURACY:** Within 1% of scale range. Silicone shock mounted for lasting durability. **SCALE:** White coated aluminum with permanently baked bold black markings. **FILL:** Blue liquid. (Red liquid available) **TUBE:** Magnifying Glass Lens.

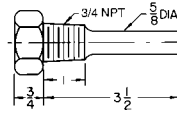
NOTE: Plastic Front as an option.

® Vari-angle is a registered trademark of Weiss Instruments, Inc.

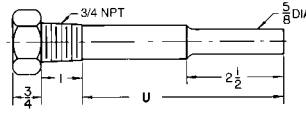
Scale Size	X
7"	9 3/4"
9"	11 3/4"

COMPLETE CATALOG NUMBER DEFINING AVAILABLE MATERIAL:

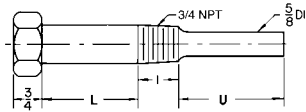
Brass ADD Suffix **BS**
 304SS ADD Suffix **SS**
 316SS ADD Suffix **316SS**
 EX: E35-75BS



Standard Stem - E Series



Long Stem - ER Series



Extension Neck - EN Series

CAT. NO.	U	NPT
E35-75	2 1/2	3/4"

CAT. NO.	U	NPT
ER6-75	5	3/4"
ER9-75	8	3/4"
ER12-75	11	3/4"

CAT. NO.	L	U	NPT
EN6-75	2 1/2	2 1/2	3/4"

CAT. NO.	L	U	NPT
ESS35-75	1	13/4	3/4"
ESS35-50	1	13/4	1/2"

Series

CAT. NO.	L	U	NPT
ENS9-75	2 1/2	5 1/2	3/4"
ENS12-75	2 1/2	8 1/2	3/4"

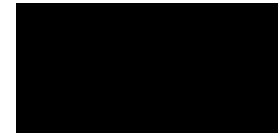
Extension Neck - Ext'n Stem - ENS Series

VARI-ANGLE INDUSTRIAL THERMOMETERS					
QTY.	CAT. NO.	SCALE LGTH.	STEM LGTH	RANGE	TAG
	A9VU35	9"	3 1/2"		
	A9VU6	9"	6"		

THERMOWELLS						
QTY.	CAT. NO.	STEM LGTH.	INSERTION	NPT	MATERIAL	TAG
	E35-75BS	3 1/2"	2 1/2"	3/4"	BRASS	
	ER6-75BS	6"	5"	3/4"	BRASS	
	EN6-75BS	6"	2 1/2"	3/4"	BRASS	
	ESS35-75BS	3 1/2"	1 3/4"	3/4"	BRASS	

TEMP RANGE - DUAL SCALE DEGREES F&C	
°F RANGES	°C RANGES
-40-0-110°F	-40-0-43°C
0-120°F	-15-0-45°C
0-160°F	-15-0-70°C
30-180°F	-15-0-180°C
30-240°F	0-110°C
30-300°F	0-150°C
50-400°F	0-200°C
50-550°F	0-300°C

STEM	CAT. NO.	CAT. NO.
3 1/2"	A7VU35	A9VU35
6"	A7VU6	A9VU6
9"	A7VU9	A9VU9
12"	A7VU12	A9VU12



Cat.No. ECC - Brass Cap & Chain

CUSTOMER _____
 PROJECT _____
 ENGINEER _____
 PRO or P.O. NO. _____



DESCRIPTION: Aluminum Case Design
Vari-angle® Industrial Glass Thermometer
 Full Conformance with ASME B 40.200

DRAWN BY: _____ DATE: _____ DRAWING: _____