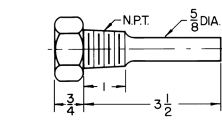


SPECIFICATIONS

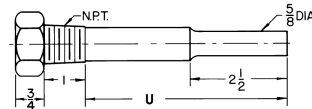
CASE	Hi-impact ABS
RANGE with F/C Switch	-50/300 °F (-45/150 °C)
DISPLAY	1/2" LCD digits, wide ambient formula
ACCURACY	1% of reading or 1° whichever is greater
RESOLUTION	1/10° between -19.9/199.9 °F (-28/93 °C)
RECALIBRATION	Through case potentiometer adjustment
LUX RATING	10 Lux (one foot-candle)
UPDATE	10 seconds
AMBIENT OPERATING	-30/140 °F (-35/60 °C)
AMBIENT TEMP ERROR	Zero
HUMIDITY	100%
SENSOR	Glass passivated thermistor - NTC
STEM ASSEMBLIES	INDUSTRIAL GLASS Full conformance with Fed Spec GG-T-321D. Fully interchangeable with Industrial Glass Thermometers.

WITHOUT SOCKET	STEM	S-Dim.
DVU35	31/2"	31/2"
DVU6	6"	5"
DVU9	9"	8"
DVU12	12"	11"



Standard Stem - E Series

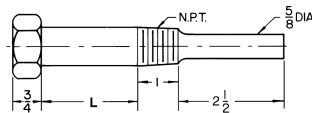
CAT. NO.	NPT
E35-75BS	3/4"



Long Stem - ER Series

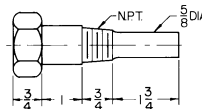
CAT. NO.	U	NPT
ER6-75BS	5	3/4"
ER9-75BS	8	3/4"
ER12-75BS	11	3/4"

QTY.	CAT. NO.	TAG
	DVU 35	
	DVU 6	
	DVU 9	
	DVU 12	



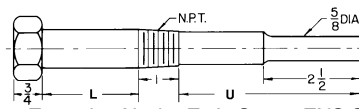
Extension Neck - EN Series

CAT. NO.	L	U	NPT
EN6-75BS	2 1/2	2 1/2	3/4"



Extension Neck - Short Stem - ESS Series

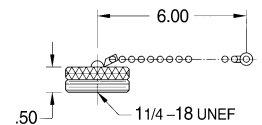
CAT. NO.	L	U	NPT
ESS35-75	1	11/2	3/4"



Extension Neck - Ext'n Stem - ENS Series

CAT. NO.	L	U	NPT
ENS9-75	2 1/2	5 1/2	3/4"
ENS12-75	2 1/2	8 1/2	3/4"

THERMOWELLS						
QTY.	CAT. NO.	STEM LGTH.	INSERTION	NPT	MATERIAL	TAG
	E35-75BS	31/2"	21/2"	3/4"	BRASS	
	ER6-75BS	6"	5"	3/4"	BRASS	
	EN6-75BS	6"	21/2"	3/4"	BRASS	



Cat.No. ECC-Brass Cap & Chain

CUSTOMER _____

PROJECT _____

ENGINEER _____

PRO or P.O. NO. _____



WEISS INSTRUMENTS, INC.
HOLTSVILLE, NEW YORK 11742

DESCRIPTION:

Vari-angle® Digital Thermometer
Industrial Stem Assembly

DRAWN BY:

DATE:

DRAWING: